

Yuriy Daylis

From Kleyzmer to Maestro

Jewish musicians in the cultural life of Bessarabia and Moldova.



**Virtual Symposium
Researching Jewish Roots in Bessarabia
History, Genealogy, Culture
13 - 15 December 2022**



Professional Musicians of Jewish origin in Bessarabia

- East European Jewish music prior to 19th Century
- Opening of conservatory training to Jewish students in Europe
- Professional musical education in Bessarabia in 19th Century
- Organization of first private music schools in Bessarabia
- Opening of College of Secondary Music as a branch of Russian Musical Society (RMS) in Kishinev
- First public concerts of students and teachers of music schools organized in Kishinev

За хранение платья члены О-ва и учащиеся платятъ—
20 коп., а посторонние—30 коп.

Программа 5 коп.

ИМПЕРАТОРСКОЕ

Русское Музыкальное Общество
Кишиневское Отдѣленіе.

Въ Субботу, 18-го Октября 1908 г.,

въ залѣ Музыкальнаго Училища

Подольская ул., домъ Писаржевскихъ, № 58.

СОСТОИТСЯ

ПЕРВЫЙ ПУБЛИЧНЫЙ
БЕЗПЛАТНЫЙ

УЧЕНИЧЕСКІЙ МУЗЫКАЛЬНЫЙ
ВЕЧЕРЪ.

ПРОГРАММА:

ОТДѢЛЕНІЕ I.

- 1) Сватина C-dur I-ая часть Шиндлеръ
исп. уч-ца (младш. кур.) Р. Шпиртъ — кл. фор-но К. Г. Спитта
- 2) а) Patineurs Kullak
б) Andalousse Fessard
исп. уч-ца (кур.) Н. Стоянова — кл. фор-но К. Р. Вейриха
- 3) Этюд Лешторна
исп. уч-ца (мл. кур.) Э. Краснянская — кл. фор-но К. Г. Спитта
- 4) Chanson triste Чайковского
исп. уч-къ (ср. кур.) В. Миссо — кл. виолонч. С. С. Клячко
- 5) а) Grande marche Шуберта
б) Marche militaire } въ 4 руки
исп. уч-цы (сред. кур.) Л. Вейрихъ и Э. Лифшицъ —
клас. фор-но К. Р. Вейриха.

ОТДѢЛЕНІЕ II.

- 6) Danse des lutins Grieg
исп. уч-ца (ср. кур.) О. Чежердѣвичъ кл. фор-но К. Р. Вейриха
- 7) Концертъ D-moll I-ая часть Моцарта
исп. уч-къ (ср. кур.) И. Бейнъ кл. фор-но К. Я. Шлезингеръ
- 8) Fantasie appassionata Вьетана
исп. уч-къ (ст. кур.) І. Дайлисъ — кл. скрипки І. М. Финнеля
- 9) Le printemps Sinding
исп. уч-ца (ст. кур.) Ф. Готлибъ — кл. фор-но К. Р. Вейриха
- 10) Improvisation Chopin
исп. уч-ца (ст. кур.) М. Дайлисъ — кл. фор-но К. Я. Шлезингеръ

Начало ровно въ 7^{1/2} часе вечера

Г-л. члены Общества входят по членским билетамъ

Дирекція приглашаетъ гг. членовъ Общества записаться би-
летами заблаговременно.

ПРИМЪЧАНІЕ: Дѣйствительные члены Общества годовой член-
скій взносъ платятъ 15 руб., а члены-посѣтители — 8 руб.

Пріемъ прошеній для поступленія въ Музыкальное Училище
производится ежедневно, кромѣ праздничныхъ и воскресныхъ
дней, въ канцеляріи Училища.

Плату за хранение платья просятъ вносить въ кассу

Аплодисменты воспрещаются.



АКТЪ

Музыкальнаго Училища,

СОСТОЯЩАГО

при Кишиневскомъ Отдѣленіи ИМПЕРАТОРСКАГО Русскаго
Музыкальнаго Общества,

въ Воскресеніе, 9 Мая 1910 года,

въ залѣ Городской Думы.

ПРОГРАММА:

Отдѣленіе I-е.

- 1) Увертюра въ 8 рукъ Edmont Бетховена.
исп. **О. Чернедековичъ**, **Ф. Готлябъ**,
Е. Папаниноглу и **Е. Глазеръ** —классъ
форт. К. Р. Вейриха.
- 2) Концертъ I и II-я части Бруха.
исп. Г-нъ **А. Герцманъ**, окончив. по
классу скрипки **С. Л. Бретаницкаго**.
- 3) Концертный этюдъ As-dur, № 2 Шлецера.
исп. Г-жа **В. Мудринъ**, окончив. по
классу форт. **К. Я. Шлезингеръ**.
- 4) Mia sposa sarà la mia bandiera Rotoli
исп. уч-къ **П. Алексѣевъ** (баритонъ),
поступилъ въ Январь 1910 г. по классу
сопран. пѣнія **А. Х. Дисконци**.
- 5) Концертный этюдъ Des-Dur Листа
исп. Г-жа **А. Обушинская**, окончив. по
классу фор-но **К. Г. Снитта**.
- 6) Арія князя (каватина) изъ оп. „Русалка“ Даргомыжскаго.
исп. уч-къ **К. Сюрделли** (теноръ), по-
ступилъ въ Январь 1910 г. по классу
сопран. пѣнія **А. Х. Дисконци**.

Отдѣленіе II-е.

- 7) Etude de trilles Döhler
исп. Г-жа **Е. Папаниноглу**, окончив. по
классу форт. **К. Р. Вейриха**.
- 8) a) Caro mio ben Giordani
b) Rinaldo Lascia pianga Mendel
исп. уч-ца **Е. Неручева** (контральто),
поступила въ Сентябрь 1909 г. по клас-
су сопран. пѣнія **А. Х. Дисконци**.
- 9) Полонезъ A-dur Венявскаго.
исп. Г-нъ **І. Дайлисъ**, окончив. по
классу скрипки **І. М. Финкеля**.
- 10) Marche militaire Schubert-Taussig
исп. Г-жа **Е. Глазеръ**, окончив. по
классу фор-но **К. Р. Вейриха**.
- 11) a) „Jocelyn“, романсъ Godar
b) „Синя малютка“ Гречанинова.
исп. уч-ца **Е. Каназирская** (сопрано),
поступила въ сентябрь 1909 г. по клас-
су сопран. пѣнія **А. Х. Дисконци**.

Начало въ 8 час. вечера.

*Билеты заблаговременно можно получить въ канцеляріи Му-
зыкальнаго Училища (Подольская № 58), ежедневно отъ
10 ч. утра до 6 час. вечера, а въ день акта, при входѣ въ
залъ Городской Думы съ 7 ч. веч. до окончанія акта*

Дирекція приглашаетъ г.г. членовъ общества записаться билетами
заблаговременно.

За храненіе платья 20 коп.

Плату за хранен. платья просятъ вносить въ кассу

Концертный рояль фабрики Бехштейна принадлежитъ
Музыкальному Обществу.

- Jewish families and musical education
- Jews becoming a major wave of classical music professionals
- Musical education during Romanian period 1918-1940
- Opening of the Kishinev State Conservatory
- Passing the baton



Teachers of conservatory "Unirea"



Kishinev State Conservatory

Iosif Daylis

- ▶ Iosif Lvovich Daylis - Violinist, conductor, and teacher
- ▶ Born in 1893 in Kishinev
- ▶ Studied violin since 1902 at Russian Musical Society with V.Salin, M. Serbulov, and I. Finkel
- ▶ 1913 – 1917 Brussels Conservatory (class of C. Tompson) and Geneva Conservatory (class of H. Herman)
- ▶ 1917 Graduated from Geneva Conservatory with “Diploma of a Virtuoso”
- ▶ 1918 Return to Kishinev



- 1919 – 1926 Worked as violinist and conductor in Kishinev and Iasi
- 1926 – 1940 Concertmaster of the Bucharest Opera Orchestra



National Theater
in Bucharest where Opera
performed till 1944

- ▶ 1926 – 1940 Solo performances on radio, member of the string quartet
- ▶ 1930 – 1940 Orchestra Symfonietta
- ▶ 1930 – 1940 Professor at a private conservatory

DUMINICĂ 13 IANUARIE 1929

▶ CONCERT ▶

DAT DE
ASOCIAȚIUNEA MUZICALĂ ROMÂNĂ
LA „CASA FEMEII“
SPLAIUL IMPRIMERIEI, 2

CU BINEVOITORUL CONCURS AL D-REI ALICE NICOLAESCU (CANTO)
AL MAESTRULUI
GEORGES BOSKOFF (PIAN)
ȘI AL D-LOR
A. THEODORESCU, I. DAILIS, TH. POPOVICI ȘI I. THALER
DIN „ASOCIAȚIA DE MUZICĂ DE CAMERĂ“

PROGRAM :

| | |
|----------------------------------|---|
| | I. |
| Ci. Debussy | Quartet sol minor (4 părți) |
| | II. |
| Schubert | Die Forelle |
| Duparc | Invitation au Voyage |
| Juarez -Movilă | Codrule Codruțule |
| | III. |
| Bach (transcripțiune de Boskoff) | Preludiu și Fugă |
| | Nocturnă |
| Chopin | 2 valsuri |
| | 2 mazurci |
| | 2 etude |
| Albeniz | Sevilla |
| Debussy | La Cathédrale engloutie |
| Fauré | Nocturnă |
| Boskoff | Variațiuni după tema „Ah, vous dirai-je, maman“ |
| | „Caprice Viennois“ |

Printed by Alice Nicolaescu



Sergiu Comissiona and Aleksandr Daylis
St. Paul, MN 1995

- ▶ 1940 -1941 Kishinev State Conservatory
- ▶ 1941 Daylis was evacuated to Sverdlovsk
- ▶ 1941 -1940 Sverdlovsk Symphony orchestra
- ▶ 1941 – 1944 Teacher at Sverdlovsk music school
- ▶ 1944 Return to Kishinev



Daylis Family 1944



Handmade card from teachers of Sverdlovsk music school

- 1944 – 1953 head of the string department in the Kishinev State Conservatory
- 1946 – 1961 participated in chamber music concerts at the Philharmonic, the conservatory and on the radio
- 1953 – 1968 professor at Kishinev State Conservatory
- 1968 retired
- 1984 passed away in Kishinev



Iosif Daylis with his former students
October 6, 1968



Isaac Bain

- ▶ Isaac Borisovich Bain - Romanian and Soviet conductor.
- ▶ Born in Kishinev in 1896
- ▶ Studied piano from 1904 with Klara Shlesinger
- ▶ Music and Drama Academy in Vienna 1912-1915 with Paul de Kan
- ▶ First World War — at the front, shell-shocked.
- ▶ Concert pianist, conductor at private opera in Kishinev (1918-1924)
- ▶ Conductor of the Bucharest Opera House, organist of the Bucharest Choral Synagogue 1924 - 1940





Isaac Bain (second left) after performance at Bucharest Opera

BILETELE 152 | **Opera Română**
(Teatrul LIRIC)

Duminică 24 Martie 1935
orele 8³⁰ seara precis

CASA CU TREI FETE

Libret de A. K. Wilber și Jean Sibelius. Musica de Sibelius. Versiunea românească de I. Beiu-Roman

| | | | |
|---------------|---------------------------|--------------|--------------------|
| Prima Solistă | Mihail Nasta | Alte | Lucian Nanu |
| Prima Solist | Dinu Bădescu | Alte | L. Simionescu |
| Prima Solist | Al. Alger | Alte | M. Podorea |
| Prima Solist | Rudolf Steiner | Alte | Ana Boicescu |
| Prima Solist | EL. Alpaiz | Prima Solist | Elena Atanasiu |
| Prima Solist | N. Secăreanu | Prima Solist | Anuta Dragomirescu |
| Prima Solist | G. Oortisan | Prima Solist | Anny Popescu |
| Prima Solist | Virginia Miciora | Prima Solist | D. Zavadnicu |
| Prima Solist | Zoe Corfescu | Prima Solist | George Marinescu |
| Prima Solist | Evantia Costinescu | Prima Solist | N. Costinescu |
| Prima Solist | Emilia Gultianu | Prima Solist | Dr. Grigorescu |
| Prima Solist | Ada de Barbu | Prima Solist | FL. Niculescu |
| Prima Solist | L. Manolescu | | |

Acțiunea se petrece la Viena în anul 1825

Conducerea muzicală: **I. BEIU**

Directorul de scenă: **Prof. A. M. Markowski**

Maestru de balet: Anton Romanowsky

Înălțimea spectacolului orchestra operelor va executa ouvertura „Rosamunda” de Schubert

După ridicarea cortinei, nu se mai poate intra în sală

PREȚURILE BILETELOR: 1^{er} RANG 2000 LEI, 2^{ea} RANG 1500 LEI, 3^{ia} RANG 1000 LEI, 4^{ta} RANG 500 LEI, 5^{ta} RANG 200 LEI, 6^{ta} RANG 100 LEI, 7^{ta} RANG 50 LEI, 8^{ta} RANG 25 LEI, 9^{ta} RANG 10 LEI, 10^{ta} RANG 5 LEI

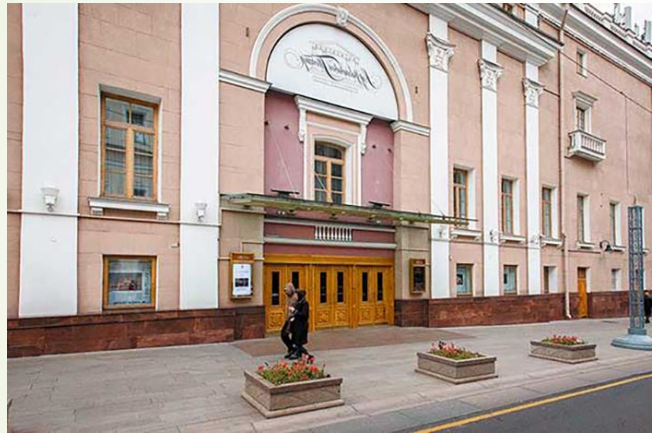
Selecție la Agenția Teatrului Jean Fiedler, iar în seara spectacolului la Casa Opera.

Playbill of
Bucharest Opera
production



Bucharest Choral
Synagogue

- 1942 - Isaac Bain joined Stanislavsky Opera and Drama Studio as a conductor and later as a chief conductor
- 1948 -1963 Conductor of the Stanislavsky and Nemirovich-Danchenko Moscow Academic Musical Theater. Multiple productions including:"The Beautiful Elena" by F. Offenbach, "The Stone Flower" by K. V. Molchanov (1950), "Bocaccio" by F. Zuppe (1957), "Tosca" by G. Puccinni (1959).



Stanislavsky and Nemirovich-Danchenko
Moscow Academic Musical Theater

- 1963 - one of the founders, and chief conductor of the People's Opera Theater at the Moscow House of Culture of Railway workers. In charge of many opera productions such as "Rigoletto" and "Otello" by G. Verdi, "The queen of Spades" by P. Tchaikovsky, "Pagliacci" by R. Leoncavallo
- Died in 1990 in Moscow

Gita (Gitl) Strakhilevich

- ▶ Gita Strakhilevich was born in Kishinev in 1915
- ▶ Studied piano with Naum Isaakovich Vilik, a student of Leopold Auer.
- ▶ Graduated from the gymnasium (lyceum) "Princesses Dadiani" and Received her bachelor's degree in 1934



- ▶ In 1934-1936 she studied at the Chisinau Conservatory "Unirea" with Antonina Mikhailovna Stadnitskaya
- ▶ 1936-1940 — student at the Royal Academy of Music and Dramatic Art in Bucharest, piano class of Florica Musicesku
- ▶ 1938 participated in chamber music concert as a partner to George Enescu.




 Conservatorul Național de Muzică și Artă Dramatică

SALA EPARHIALA

I-a Audițiune
 Sâmbătă 18 Noembrie 1933
 va avea loc un
Concert de Piano
 executat de Eleva Conservatorului
G. STRAHILEVICI
 cl. de pian prof. A. M. Stadnițcaia-Andrunachievi

PROGRAM

 PARTEA I-a.
 1) BACH—LISZT. Orgel-Fantasia und Fuge in G-moll
 2) BRAHMS-HÄNDEL. Variationen und Fuge.
 PARTEA II-a.
 3) CHOPIN. Sonate B-moll
 a) Grave
 b) Scherzo
 c) Marche funèbre
 d) Final.
 PARTEA III-a.
 4) CHOPIN { a) Berceuse Des dur
 b) Barcarolle Fis dur
 5) RACHMANINOFF { a) Prelude Gis moll
 b) Polka
 c) Capriciu-Romance
 6) SCRIABINE { a) Etude No. 11
 b) Etude Patetico No. 12.
Inceputul la ora 8 seara.

 Tipografia S. MUNTEANU, Chișinău.

- ▶ 1940 – 41 soloist of the Kishinev Philharmonic
- ▶ 1941 - 44 performed at the fronts with the “Doina” ensemble
- ▶ 1944 – 48 headed the music department of the Moldovan State Philharmonic
- ▶ From 1944 worked at the Kishinev Conservatory as an accompanist
- ▶ 1953 – 81 soloist of the Moldovan Radio and Television Broadcasting Committee, where she led her own broadcast program "At the piano Gita Strakhilevich"
- ▶ First interpreter of multiple works written by contemporary Moldovan composers Zlata Tkach, Gheorghe Georgica, Vasile Zagorski, Pavel Rivilis, Arkady Luxemburg, David Fedov and others.



Moldovan State Philharmonic

- 1967 Gita Strakhilevich received a title Honored Artist of the Moldavian SSR
- 1995 awarded the Meritul Civic Medal
- 1996 awarded the Order of the Republic (Ordinul Republicii) of the Republic of Moldova
- Died in 2002 in Chisinau, Moldova



Garry Shirman


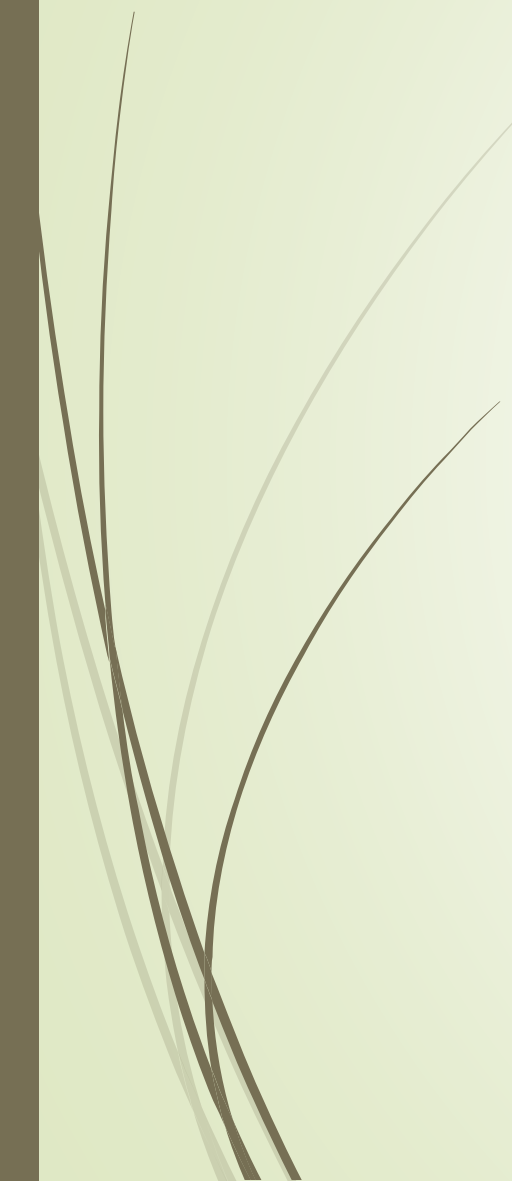
- ▶ Huna Aronovich Shirman was born in 1919 in Kishinev
- ▶ 1925 - 1931 studied violin at the Kishinev Imperial Music College
- ▶ 1932 – 1936 studied at the Kishinev Conservatory "Uniria" in the class of clarinet and in the class of violin with M. Pester



- ▶ 1936 moved with his parents and sisters to Bucharest
- ▶ 1936 – 1937 worked as a violinist in the orchestra of Peter Leshchenko and other swing groups
- ▶ 1937 – 1939 performed as saxophone player at the restaurant "Vulturul Negru" in Chernivtsi
- ▶ 1939 – 1940 played violin, clarinet, and saxophone in the restaurants "Pelican" and "Colorado" in Bucharest



Orchestra at the restaurant
"Vulturul Negru" in Chernivtsi
1937

- 
- 
- ▶ 1940 returned to Kishinev
 - ▶ 1941 evacuated with his family to the city of Kokand in Uzbekistan
 - ▶ 1942 joined the Moldovan jazz music orchestra (“Moldgosjazz”) under the direction of Shiko Aranov
 - ▶ 1942 – 1944 with the orchestra performed on many fronts entertaining soldiers, sailors, and aviators.
 - ▶ 1942 – 1944 “Moldgosjazz” gave concerts in many cities of Ural, Siberia, Far East, and Northern parts of Russia.
 - ▶ 1944 “Moldgosjazz” returned to Kishinev
 - ▶ 1948 “Moldgosjazz” orchestra was disbanded.
 - ▶ 1948 – 1953 student of the Kishinev State Conservatory, where he studied in the violin class of Professor Iosif Daylis.
 - ▶ 1953 -1954 performed as a violinist with the Moldovan State Symphony Orchestra conducted by B. Milutin, and T. Gurtovoy

- ▶ 1956 Moldovan State Jazz Orchestra restored under the direction of Shiko Aranov (later Bukuria orchestra)
- ▶ 1956 – 1964 Garry Shirman worked as soloist and music director of the Bukuria orchestra and in 1962-1964 he also led the orchestra.



Shiko Aranov

МИНИСТЕРСТВО КУЛЬТУРЫ МССР
МОЛДАВСКАЯ ГОСУДАРСТВЕННАЯ ФИЛАРМОНИЯ

**ЭСТРАДНЫЙ ОРКЕСТР
 МОЛДАВИИ**

Художественный руководитель, народный артист Молдавской ССР

Шико АРАНОВ

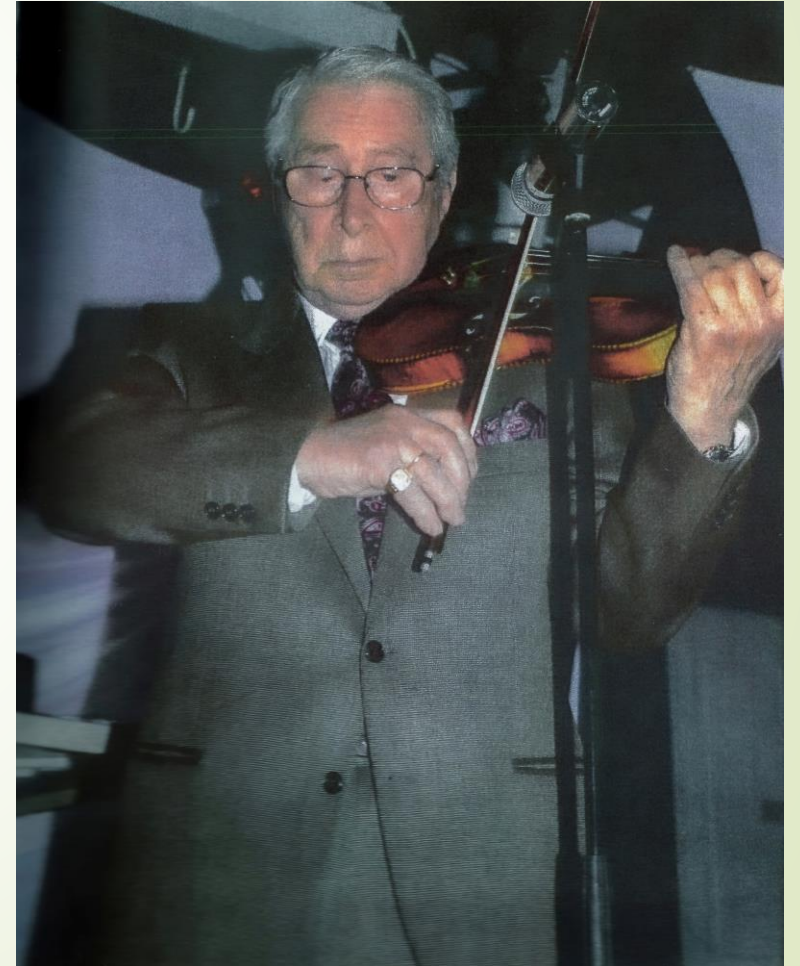
Артисты оркестра:
 В. Арнаутов
 А. Бондаренко
 К. Бонза
 И. Вдовиченко
 К. Визир
 Н. Гресул
 Г. Гроссул
 Э. Глейтер
 Г. Добрян
 М. Женин
 А. Итнн

Сольисты:
**И. БАТАСОВА, М. БРОДЕЦНАЯ, Е. БЭЛЦАНУ,
 Р. КАПЛАНСКИЙ, Е. и М. ШАРГОРОДСКИЕ**
 Конферанс и интермедии
А. БАДАШ и В. НИКОЛАЕВ
 Авторы конферанса и интермедий
 А. Арканов и О. Левницкий
 Концертмейстер-дирижер **Г. ШИРМАН**

Артисты оркестра:
 Р. Капланский
 Г. Казаков
 Л. Кобец
 Б. Легун
 Н. Лозник
 Г. Папаборщ
 В. Раду
 М. Саулеску
 Г. Саулеску
 В. Титов
 М. Тураница
 Г. Ширман

Начало в ____ час. Касса с ____ час.

- ▶ 1964 - 1966 soloist of the pop Symphony Orchestra of the Radio Committee of Moldova under the direction of Shiko Aranov
- ▶ Since 1966 performed with different jazz and pop orchestras was the head of the pop orchestra of the Kishinev Polytechnic Institute
- ▶ 1991 Garry Shirman emigrated to the USA and till his death in 2017 lived in Brooklyn, New York



References

- ▶ Nina Vieru Zubaidi - VIOLIN PERFORMANCE PRACTICE IN TWENTIETH CENTURY MOLDOVA, Temple University, 2021
- ▶ Дайлис, Иосиф. [Daylis Iosif] - Жизнь и музыка. [Life and Music]. Кишинев: GAUM, 1992.
- ▶ Сорокер Яков [Soroker Yakov]- Российские музыканты евреи [Russian Jewish musicians], Israel, 1992
- ▶ София Пропищан [Sofia Propishchan] - У рояля – Гита Страхилевич [At the piano – Gita Strahilevich] , Russia, Moscow 2017
- ▶ Гарри Ширман [Garry Shirman] - По волнам моей памяти [On the Waves of My Memory] , New York, 2009
- ▶ Зиновий Столяр [Zinovy Stolyar] - Под одним небом [Under one sky], Israel, 1993
- ▶ Orchestra de Jazz "Bucuria" - Te salut, Chisinau! https://www.youtube.com/watch?v=E05-8vWVy_o
- ▶ «Еврейское присутствие в истории, культуре и памяти Республики Молдова» <https://www.youtube.com/watch?v=VjxilRP4HCU>