

The Jewish Cemetery of Valea-lui-Vlad (Dombrovitsa)

Before 1917, Valea-lui-Vlad was part of Beltsy district of Bessarabia Gubernia of Russian Empire.
Now the town is part of Republic of Moldova

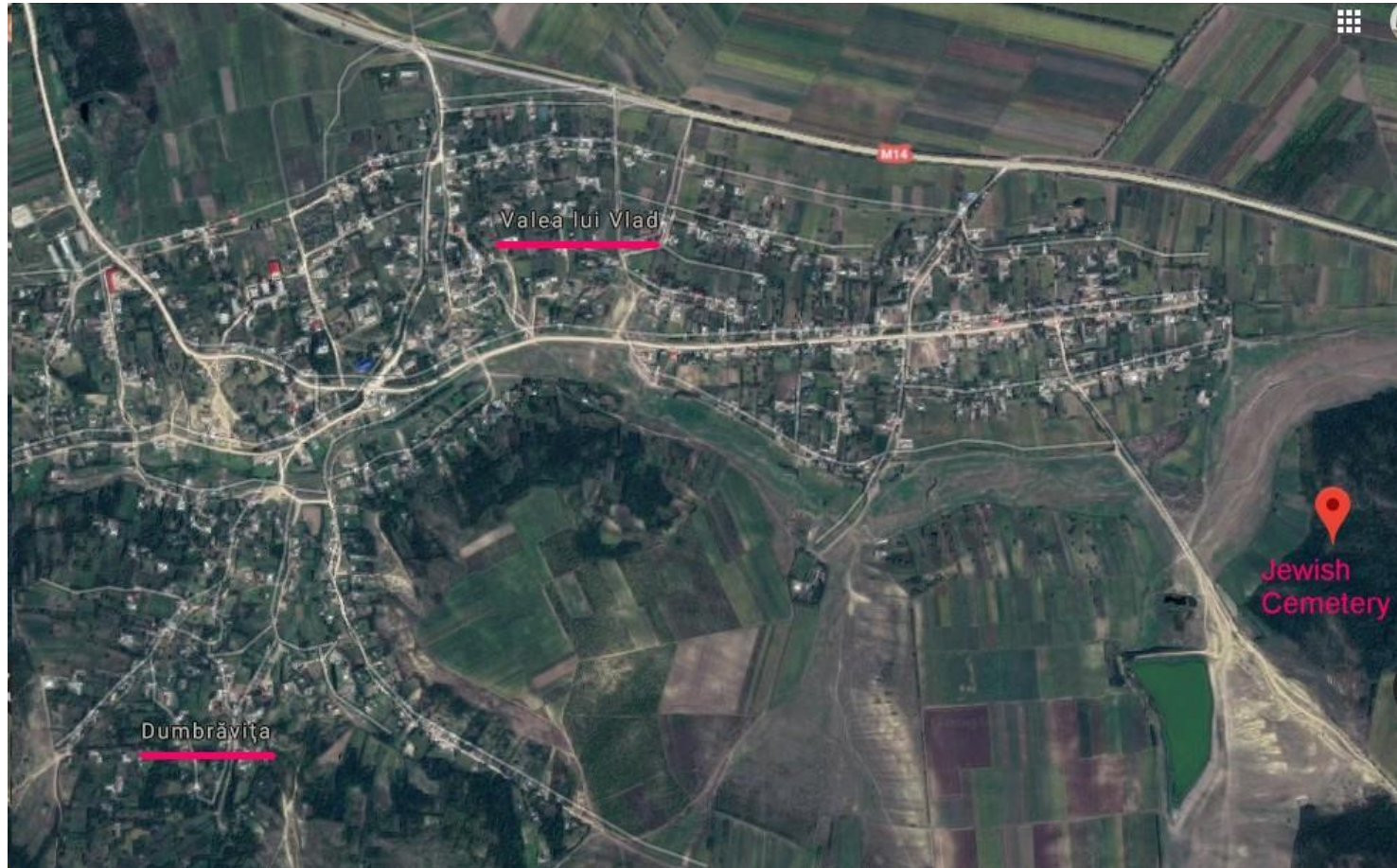
ЕВРЕЙСКОЕ КЛАДБИЩЕ Валей-луй-Влад, Молдавия

Final report, Yefim Kogan, 30 October 2019

The project was started by JewishGen, Bessarabia SIG in 2019. The photographs were taken by Serghei Daniliuk.

Address: west side of the town, coordinates: 47°28'38.6"N 28°08'26.8"E

From Google map:



Jews established 19 agricultural settlements in Bessarabia, among them Capresti (1853), Dombroveni (1836), Valea-lui-Vlad (1836), Lublin (1842), Marculesti (1837), etc Valea-lui-Vlad was established on an area of 934 acres which had been purchased in 1839 by 350 Jewish families from Podolia. Per All Russia Census in 1897 there were 1318 Jews from total population of 1349. In 1899 there were 255 families (1,385 persons), including 82 landowners owning an average of 11.4 acres per family. In 1924 there were 84 Jewish businesses for total population of 2200.

In 1930 there were 1,281 Jews on the settlement (94.5 % of total population). See more at <https://dbs.bh.org.il/place/valea-lui-vlad>. Also find information about colony at the Yizkor Book at https://www.jewishgen.org/yizkor/pinkas_romania/rom2_00351.html

Now Valea-lui-Vlad together with Bocancea-Schit and Dumbrăvița are part of commune Dumbrăvița in Sîngerei District, Moldova. Dumbrăvița also had Jewish population, and that town also used Jewish cemetery at Valea-lui-Vlad. See more about Dumbrăvița at https://kehilalinks.jewishgen.org/Colonies_of_Ukraine/Dombrivtz.htm

Here are town sites for Valea-lui-Vlad:

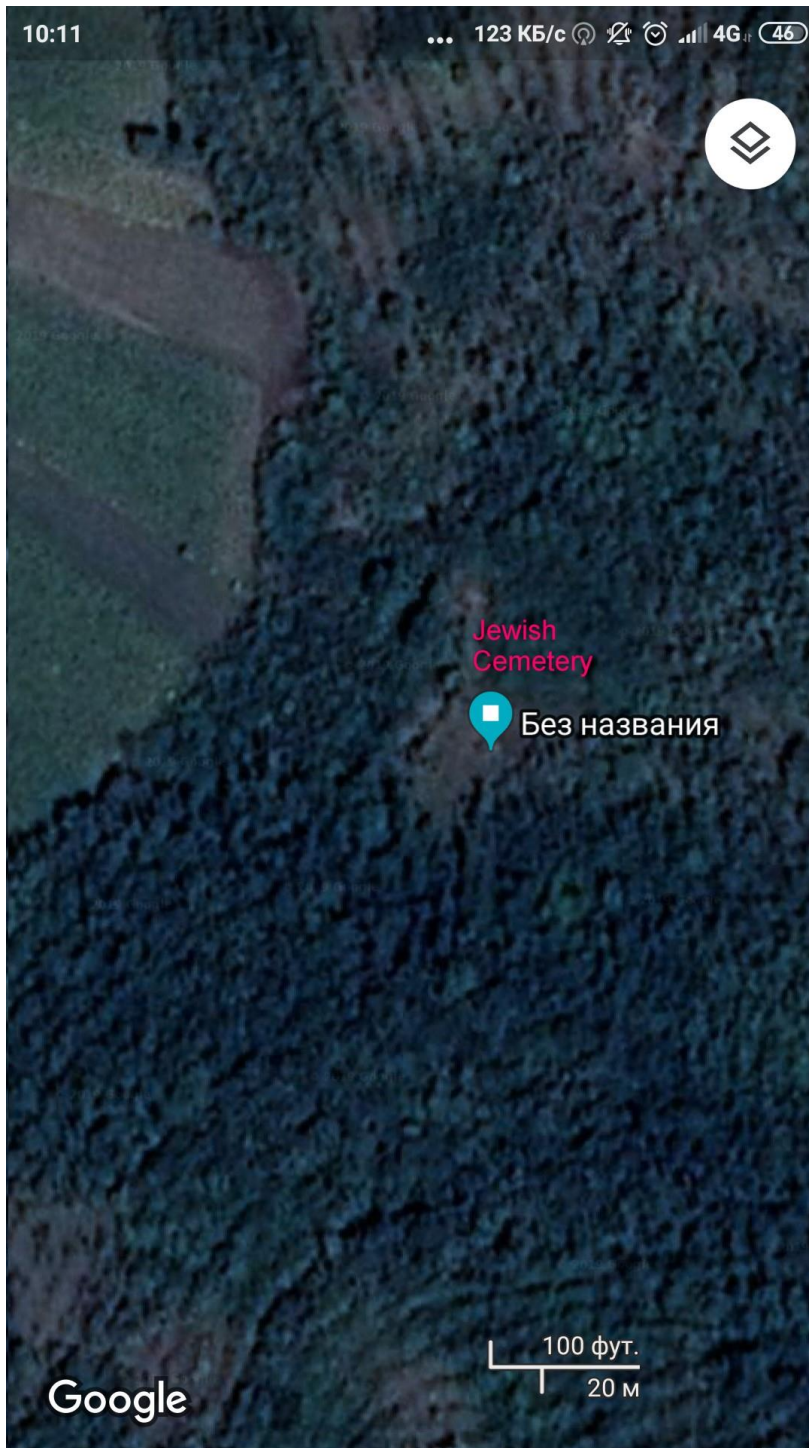
https://www.jewishgen.org/bessarabia/GEO_town.asp?id=74

and for Dumbrăvița: https://www.jewishgen.org/bessarabia/GEO_town.asp?id=47

We need volunteers who can create full Kehila websites for these two towns. Please contact Inna Vayner at innanes@gmail.com .



Jewish Colony of Valea-lui-Vlad with the Cemetery at the map of 1846-1863, see the whole map at https://www.jewishgen.org/bessarabia/ImgView.asp?id=images/Gallery/Maps_Military/28-6%20Beltsy_Faleshty_Teleneshty.JPG



According to our photographer and good friend of Bessarabia SIG, Serghei Daniliuk the cemetery is in the middle of the large forest, and he could not get to every gravestone. It is not clear how many stones were not photographed.

We may decide to send a team with Serghei to clear the paths and get access to every grave, probably in 2-3 years.

There are **44** images of gravestones or part of them are taken, and from that number we have a name or father's name only from 3 inscriptions! The rest does not have any inscriptions, or we could not read them.

Here are ALL 44 images of gravestones: [Graves at Valea-lui-Vlad Jewish cemetery](#)

Many thanks to **Nathen Gabriel** who worked very hard to decipher the writings.

If you know a person who was buried in that cemetery or have some old or new photos from the cemetery, please share information with the group and records, photos will be added to this report.



On of the monuments in the woods



We could not access all the gravestones to photograph them. There will be a Phase 2 to clearing paths to every grave on that cemetery.