

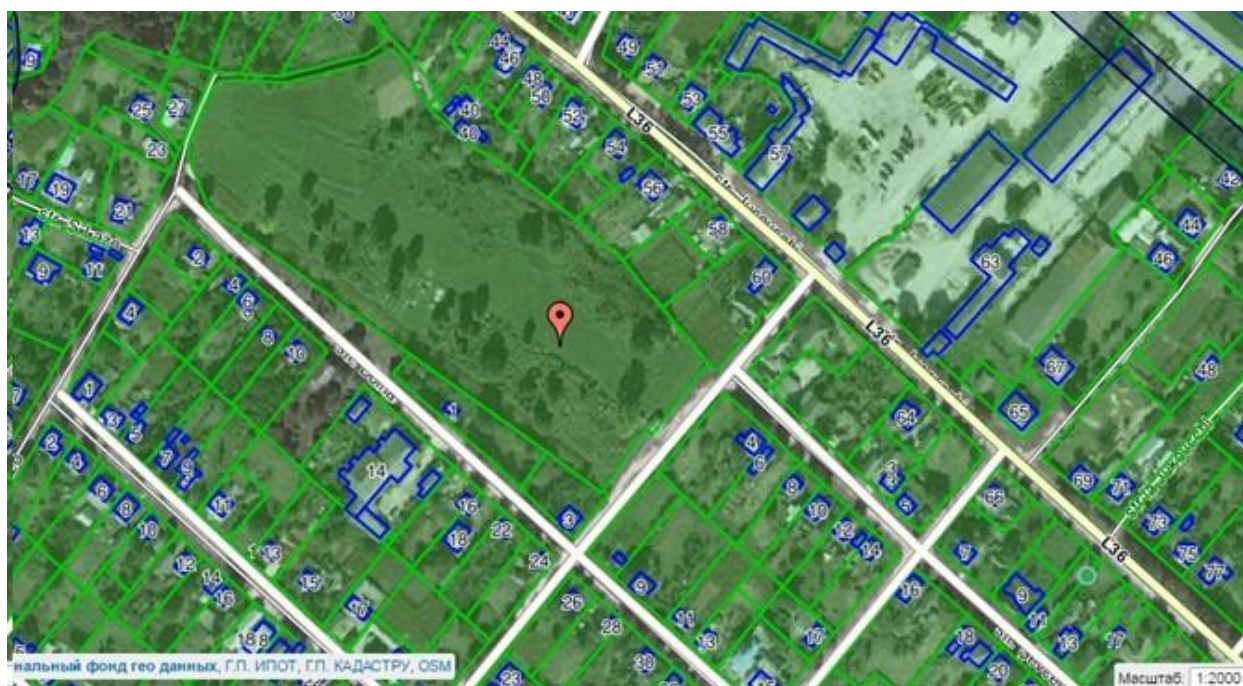
The Jewish Cemetery of Lipcani

Before 1917 Lipcani was part of Khotin district of Bessarabia gubernia of Russian Empire.

Now it is part of Republic of Moldova.

Еврейское Кладбище, Липканы, Молдова

Final report, Yefim Kogan, December 28, 2019



Reproduced from modern cadastral maps of Moldova at <http://geoportal.md/>

Location, address

Address of the cemetery: the cemetery is located between streets Zhukovskiy (Rt. L36) and Doyna in the town of Lipcani, Moldova.

Table of Contents

Location, address	1
Introduction	2
Maps.....	3
Jewish life in Lipcani, Moldova.....	4
Phase 1, 2 and 3 of the project	4
Phase 4 – Clearing paths and getting access to all tombstones	6
Total number of burial records at the Lipkany Jewish Cemetery	6
From “Jewish Heritage sites and Monuments in Moldova”	6
Volunteers.....	7
War memorials (1941-1945).....	8
The oldest graves (from Sector 1).....	12
One of the oldest graves at the cemetery	13
One of the newest graves	14
Images from the cemetery (Serghey Daniliuk)	15
Photos donated by Joyce Field.....	17
Two remarkable tombstones without inscriptions	20
From Christian Herrman’s trip to Bessarabia.....	22
An impressive stone with inscription in Yiddish, but without names!.....	24
More from Phase 4 – Clearing paths	24

Introduction

This is the phase 3 and the last one of the Lipcani Cemetery project. See below about phases 1 and 2. Phase 3 included indexing of sectors 2 – 4. All of the tombstones were photographed by **Serghey Daniliuk**, a resident of Kaushany, Moldova who photographed many Jewish cemeteries in Bessarabia and Moldova for Bessarabia SIG. See below for the names of the many volunteers who helped translating from Russian, Hebrew and Romanian languages.

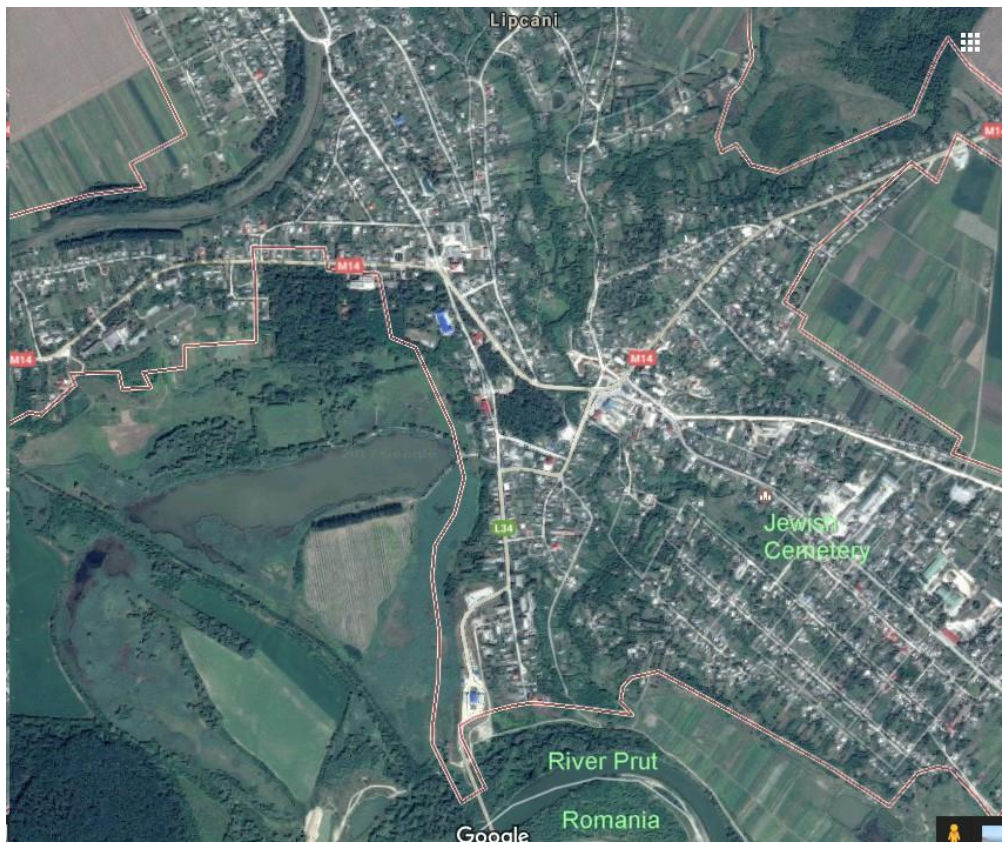
Our appreciation to all **our members** who donated money for the project! Without your support we would not be able to make it happen.

Maps

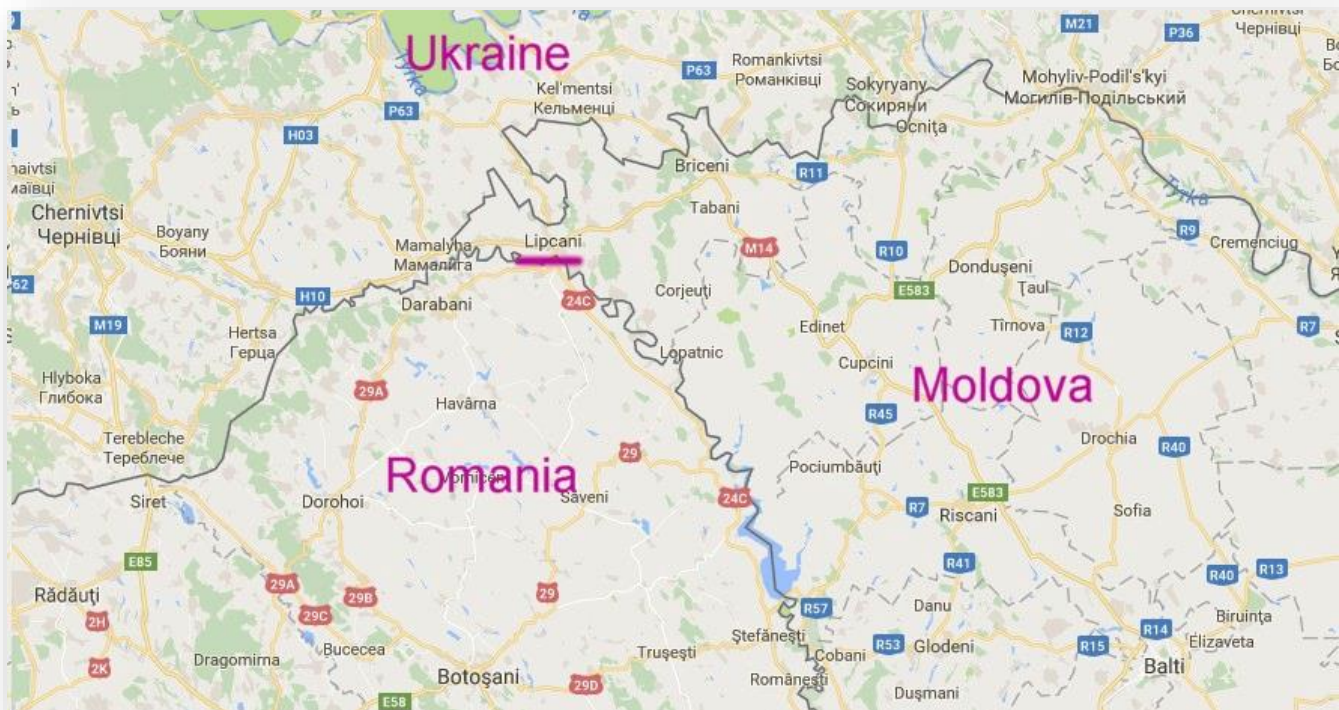


Town of Lipcani,
Moldova
between Ukraine
and Romania

River Prut is the
border between
Moldova and
Romania



Jewish Cemetery
at the Google
map of Lipcani



Lipcani on the political map of Moldova

See to the West Chernivtsi, Ukraine, to the South Botosani, Romania, and to the East Edinet, Moldova

Jewish life in Lipcani, Moldova

4,410 Jews lived in Lipcani in 1897 from a total of 6,865 residents, 329 Jewish businesses were in town in 1924 and 4,698 Jews lived in Lipcani in 1930 from a total of 5,880.

Phase 1, 2 and 3 of the project

Phase 1 for Lipcani cemetery

records were translated by Michael Glazer, UK in 2013.

118 records from 1950s-1980s were sent to JOWBR. The records were translated from the Registry found in Moldova. No photos were taken at that time.

Phase 2 was started in 2014 and included indexing for Quarter 1.

1130 burial records with 1121 photos of the tombstones uploaded to JOWBR. There are 285 Unknown graves. Most of these graves are from the beginning of 20 century. The newest burial was in 2011.

Phase 3 included indexing of Quarters 2, 3 and 4. There are burials from the end of 18th century.

690 burial records with 685 photos were uploaded to JOWBR. There are 282 photos of Unknown graves

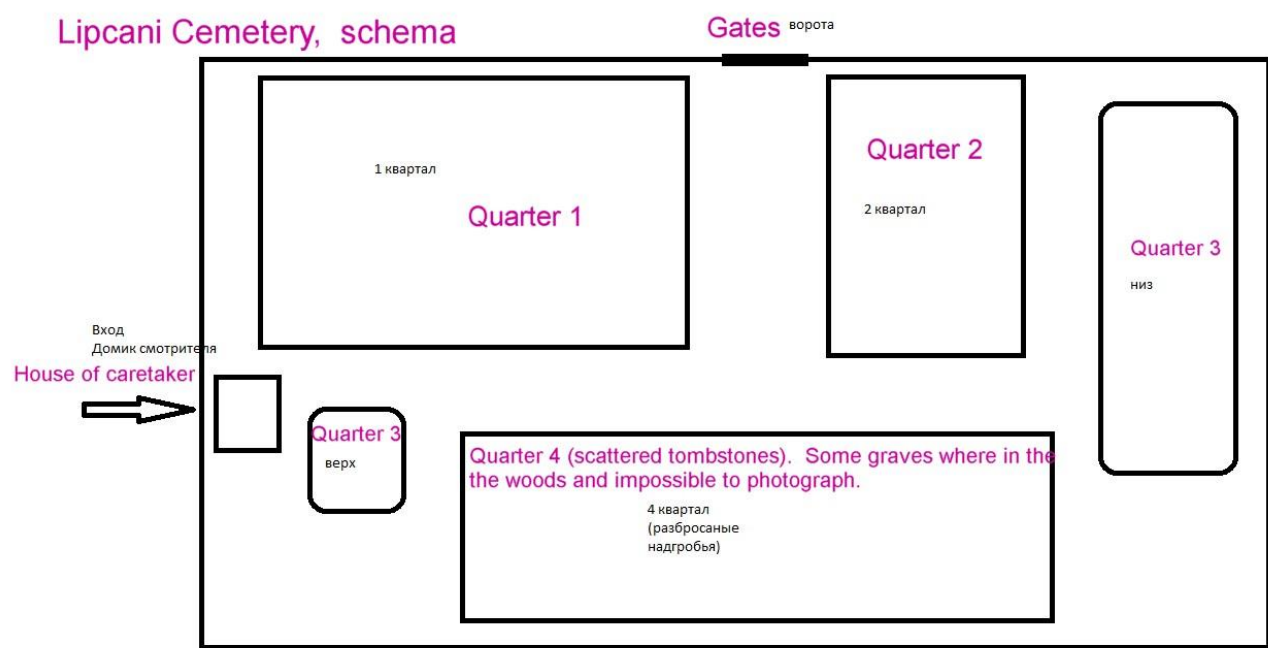
All phases together. A number of burials entered in Phase 1 were found in Phases 2 and 3, and the duplications were removed.

Total number of records for Lipcani cemetery is 1879 with 1806 photos.

There are also 567 Unknown graves, which can be accessed at the Bessarabia SIG / Cemetery section or directly at [Unknown Lipcani Cemetery graves](#).

There are some tombstones not yet photographed, because of the limited access to them. The cemetery would need a restoration and cleaning project that would allow all remaining gravestones to be photographed. (Clearing paths and getting access to all stones and photographed them was completed in 2019, see below!)

Languages of the inscriptions: most of the earlier inscriptions are written only in Hebrew, the current inscriptions (from 1950s up) are written in Russian, and there are many inscriptions written in Russian and Hebrew. One inscription is written in Romanian and Hebrew.



Schema created by Serghei D., Moldova

Plot Locations are 6 digits, starting with Quarter number: 1, 2, 3, 4, and also 9 for burials from the registry, but without photos. Next 2 digits are row, and last 3 digits is the plot inside the row.

For example 101002 - Quarter 1, Row 01, plot number 002.

There was a fire at the Lipcani cemetery in March of 2014. The reports from local media were grim that the whole cemetery was destroyed, but in fact, the gravestones were not damaged.

Phase 4 – Clearing paths and getting access to all tombstones

A large work was done at the cemetery in 2019 to Clear paths to all gravestones, and photograph all additional opened monuments. Thanks for that to Serghei Danilijuk who organized a group of men to go there and cut some trees and bushes, clean at least some of the cemetery.

As a result of this effort new 1648 records with 1643 photos was sent to JOWBR from that number 390 were Unknown and 567 Unknown from previous phases were also sent to JOWBR.

Total number of burial records at the Lipkany Jewish Cemetery

There are total of 3527 burial records with 3449 photos. From that number 957 are Unknown graves.

From “Jewish Heritage sites and Monuments in Moldova”

According to the report “[Jewish Heritage Sites and Monuments in Moldova](#)”, created by United States Commission for the Preservation of America’s Heritage Abroad, 2010, about Lipcani cemetery: *The substantial Jewish cemetery is still in use, but it is poorly maintained, with only occasional clearing or cleaning. The masonry wall that surrounds it is broken in many places. The cemetery’s size is about 10,000 square meters and there are more than 100 gravestones still visible (that number is not correct, there are much more standing monuments at the cemetery, Yefim K.), but more than a quarter of these are toppled over or broken. The oldest gravestones are datable to 18th century. They are large rectangular slabs, mostly flat, with neatly carved Hebrew inscriptions filling much of the space, but often decorated with low relief carving of Jewish symbols or various vegetal and geometric decorative patterns filling the upper quarter of the stone.*

Photo of Lipcani cemetery from report “Jewish Heritage Sites and Monuments in Moldova”.



Volunteers

Many **volunteers** worked on the Lipcani Cemetery project, translating from Hebrew, Russian, proofreading, deciphering the names which are almost unreadable.

The first reading was done by **Terry Lasky**, great job! Also we need to thank **Nathen Gabriel** who did a terrific job of deciphering many almost unreadable Hebrew inscriptions.

Thanks a lot, to all translators and proofreaders:

Ofir Azrilovich
Sheli Fain
Noam Finger
Rebecca Hauer

Gary Khusidman
Valentin Lupu
Yair Segal
Esriel Sternbuch

We also grateful to many our members from ViewMate at JewishGen who deciphered some of the unreadable inscriptions:

Yitschok Tzvi Margareten
Odeda Zlotnick

Hava & David Salita

War memorials (1941-1945)



**Here found their rest
fallen in 1941 from
the hands of fascists**

GERMAN Moshe

GERMAN David

BARAN Tzvi

BARAN Gedalya

GELIR Yehudah

GELIR Eezik

GELFAND Simcha

VEYNSHTEYN
Shimon

VAYSMAN Anchel

To Unknown Fallen from the hands of fascists





**Here lie people
that their names
are Unknown
and they were
buried in
Shevat, year
5700.**

**The family
Katzman took
upon themselves
to erect a
tombstone for
the souls who
fell as sacrifices/
victims**

To Perished in 1941

Family BARON

Khaim ben Beirikh; Yosef ben Meir; Elimelekh ben Alter; Yitzchak ben Mendil; Pesach
HANIKMAN; Rivka, Khae, Etil, Hinke daughters of Khaim



The oldest graves (from Sector 1)



An important man, our
teacher and rabbi

Moshe ben Avraham
13 Shevat 5661

(2 February, 1901)

One of the oldest graves at the cemetery



Yaakov ben Yosef

19 Heshvan 5558

(8-Nov-1797)

One of the newest graves



KATERBERG

Tatyana daughter of Arkadiy

28-Aug-1930 - 26-Sep-2011

To dear mother from son and his family, grandchildren, and great grandchildren

Remember and Love

Images from the cemetery (Serghey Daniliuk)





Home of the caretaker



Photos donated by Joyce Field





Wall, fence



Gates



Two remarkable tombstones without inscriptions





From Christian Herrman's trip to Bessarabia

See more at <https://vanishedworld.wordpress.com/category/bessarabia/>

Lipcani Cemetery, a courtesy of Christian Herrman





An impressive stone with inscription in Yiddish, but without names!



Deeply bowed
with heart torn
apart

We stand by the
fresh grave

And mourn the
premature death
of my honored
wife

And much
beloved mother
of 41 years of
age

Translated from
Yiddish by

**Odeda Zlotnick
and Ezriel
Sternbuch**

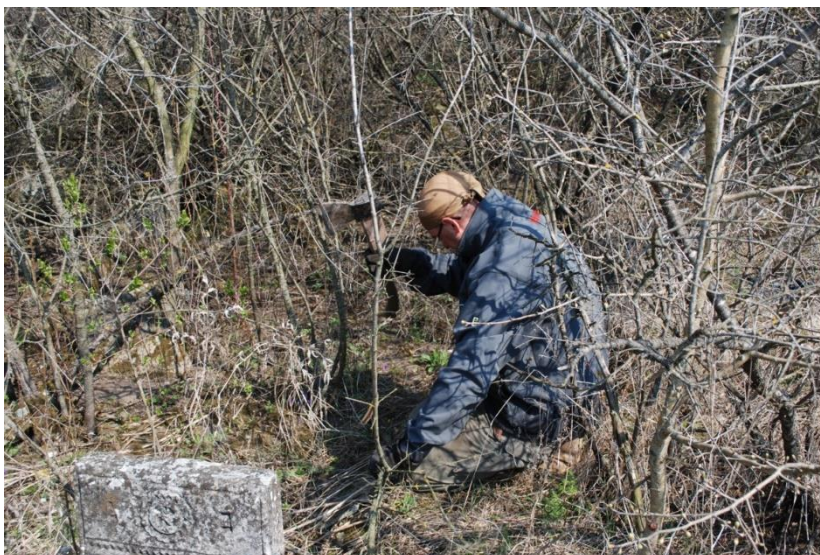
More from Phase 4 – Clearing paths

Photos before work started





How it was done





Several photos after Clearing paths was done



