

# The Jewish Cemetery of Căprești

Before 1917 Căprești (Kapreshti) was part of Bessarabia gubernia of Russian Empire.

Now the town is part of Republic of Moldova.

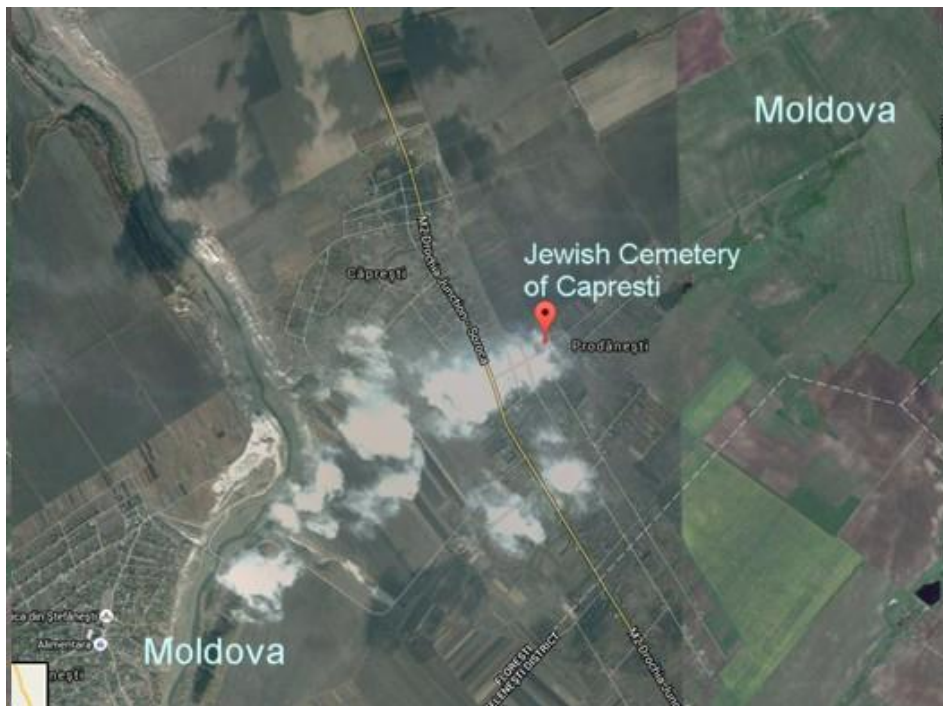
## Еврейское Кладбище, Капрешты, Молдова

Final report, Yefim Kogan, December 25, 2015

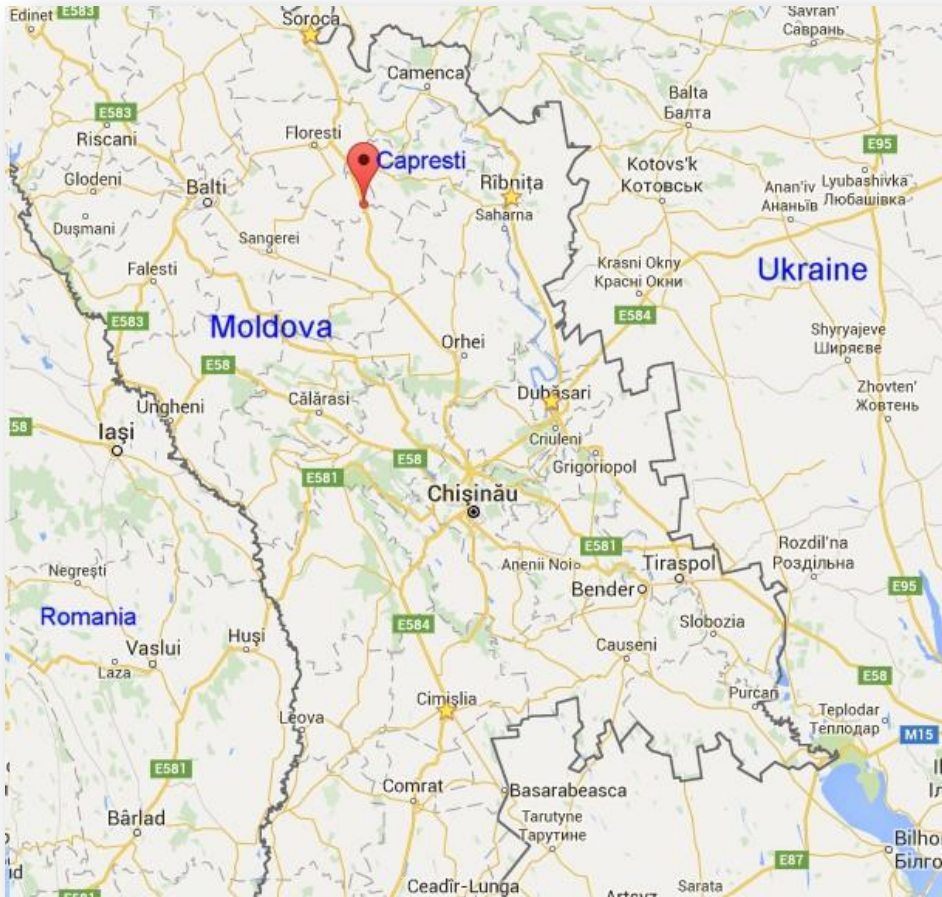
Main Translators: Nathan Gabriel

All of the photographs were done by **Simon Rascovsky**, who visited Kapreshti in 2015 and donated all of them to JewishGen/Bessarabia SIG. Simon R. wrote that “I believe I may have photographed most of the tombstones where I could identify any inscriptions. There were a few that were covered with vegetation and I had no tools to clear them.”

The cemetery is located near the road M2 Orhei – Soroca (Moldova), where the town of Prodaneshti ends and Capresti begins. See it on the map below:



The Jewish colony of Capreshti was established in 1851 by 211 Jews. 866 Jews lived in Capresti in 1897 from a total of 1002 residents. 48 Jewish businesses were in the town in 1924 and 1815 Jews from a total of 1998 residents lived in Capresti in 1930.



Capresti is shown in the map of Republic of Moldova. Close by to the east is the town of Ribnitsa (Transnistria), and to the west is the town of Belti, to the north – Soroca and the capital of Republic of Moldova Chisinau is to the south.

At the “[Jewish Heritage Sites and Monuments in Moldova](#), created by United States Commission for the Preservation of America’s Heritage Abroad, 2010,” the Capresti cemetery is listed in the town of Prodanesti.

**Simon Rascovsky** wrote: “According to a local woman that lives nearby, the cemetery had a caretaker until a few decades ago, but now it is abandoned. Since there are no Jews living in the city, that seems unlikely to change.”

In 2015 we found about 120 graves. There are **88** records **uploaded to JOWBR** with **84** photos. There are also **20** images with Unknown graves. Such images can be seen at the Bessarabia SIG website at Cemetery section or at [Unknown Graves at Capresti cemetery](#)

**Language of the inscriptions:** mostly Hebrew, a number of them are written in Hebrew and Russian.

**Dates:** Burials in this cemetery are from 1920s, and one from 1905. The last burial dated 3 October, 1989.

Our appreciation to **Nathen Gabriel** for translating and deciphering MOST of the inscriptions!

Also thanks to **Semion Boris Sukholutsky** for help in translation.

All the photos were provided by **Simon Rascovsky**.



Remainder of the cemetery wall

Panoramic view of the cemetery



**Simon Rascovsky** wrote: “The only reference I had that there was a cemetery was from the handmade map in the Yizkor book and only until I got there did I learn there were still some tombs visible. Frankly I was also unprepared for the size of it, so I took as many pictures as I could, albeit hastily. It's not the most professional of jobs but some of them may be useful.”

“...In fact it was the accounts of the trips I found in the Bessarabia SIG that inspired me to do this *<trip to Moldova and donating the photos>* and pointed me in the right direction, so I would like to give back a bit if I can.”

**Simon**, many thanks to you from myself and our Bessarabia SIG. I hope that it will inspire other people to made such trips and help Bessarabia SIG.

Yefim Kogan, Bessarabia SIG Leader and Coordinator

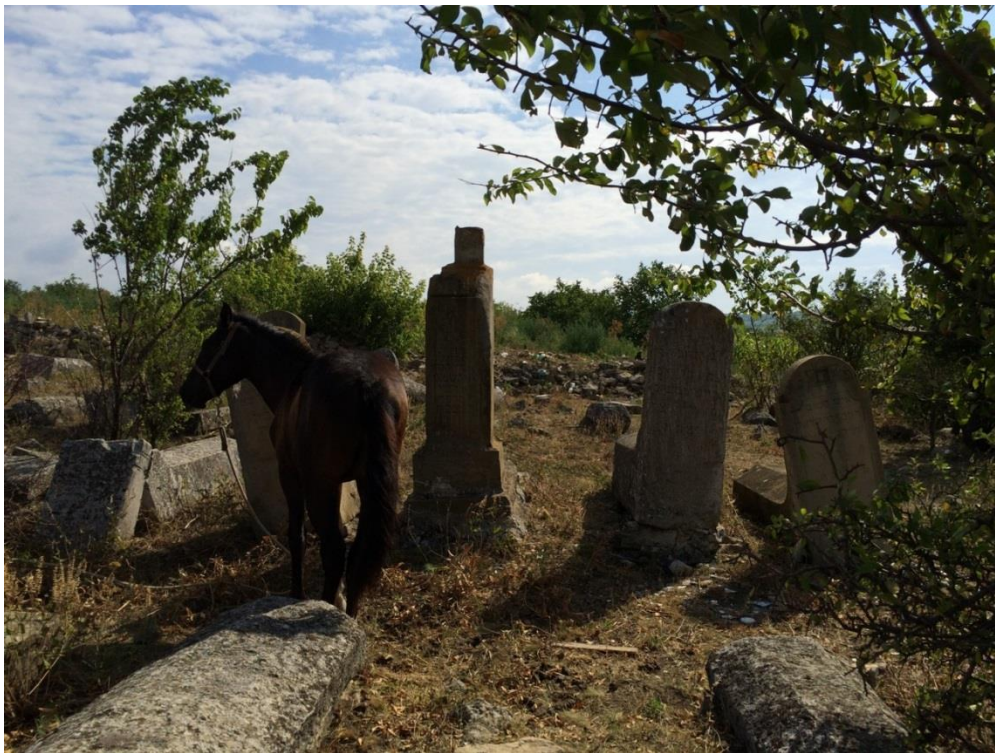


Old part of the cemetery

Many of these gravestones do not have any inscriptions!



It is very possible that these tombstones are 200+ years old





The cemetery from a distance



Open field with remaining parts of gravestones, monuments.



Tombstones in the woods



Old types of Jewish tombstones.