

The Jewish Cemetery of Nisporeni

Before 1917 Nisporeni was part of the Kishinev district, Bessarabia gubernia of the Russian Empire. Now it is part of the Republic of Moldova,

Еврейское Кладбище, Ниспорены, Молдова

Final report, Yefim Kogan, November 30, 2018



Introduction	2
Location, Maps	2
Jewish Population	4
From Jewish Heritage Sites and Monuments in Moldova	4
The project and the Volunteers	5
Images from the cemetery	5
One of the oldest graves.....	9
Most recent grave.....	10

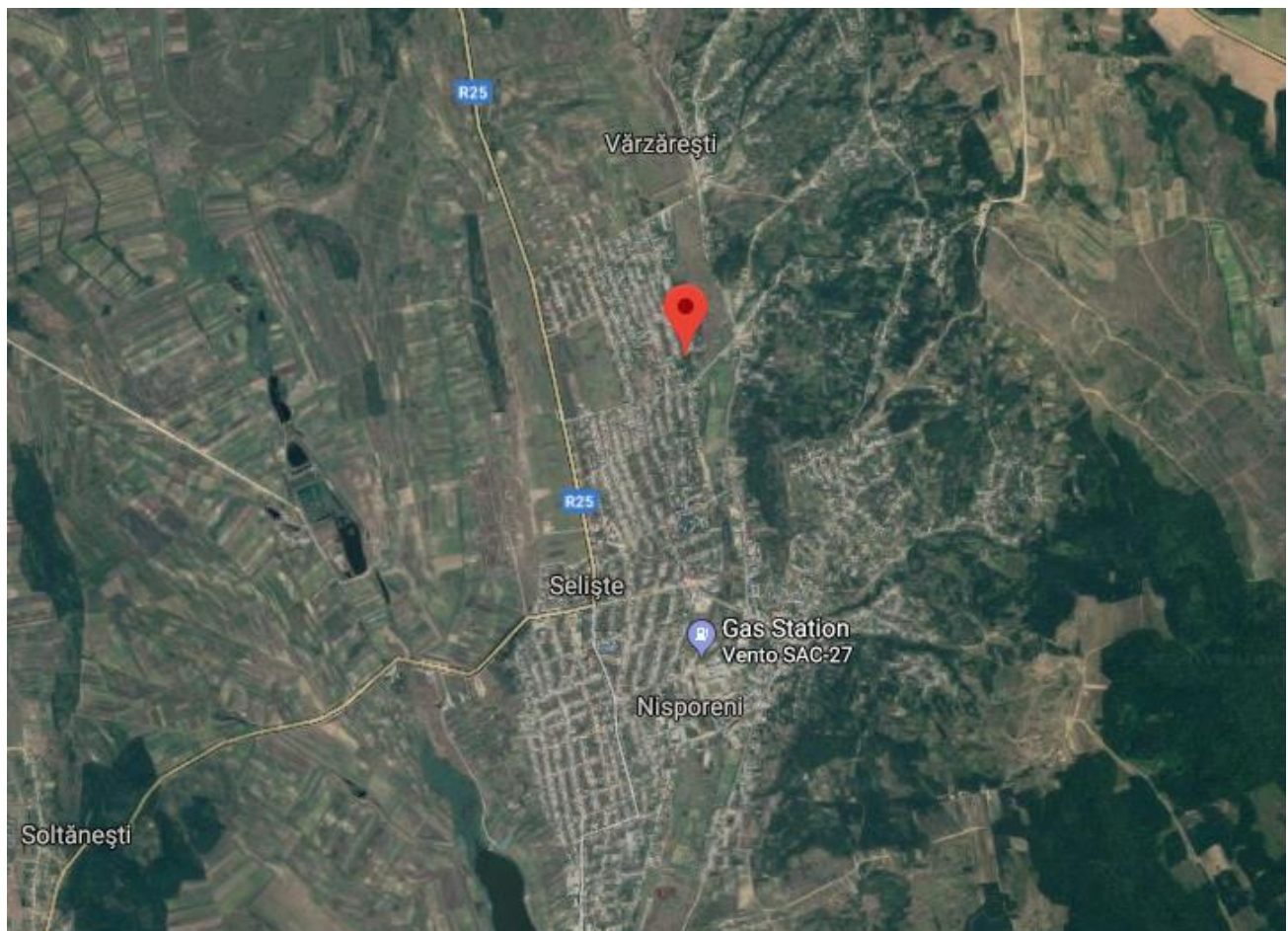
Introduction

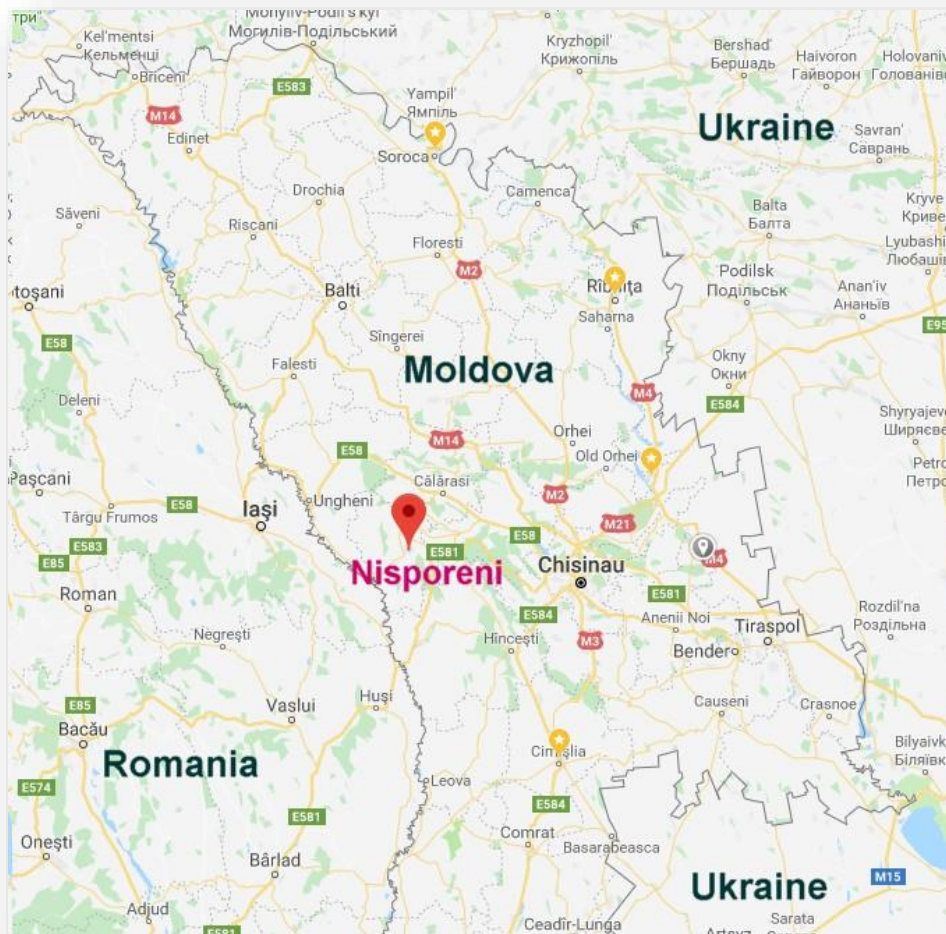
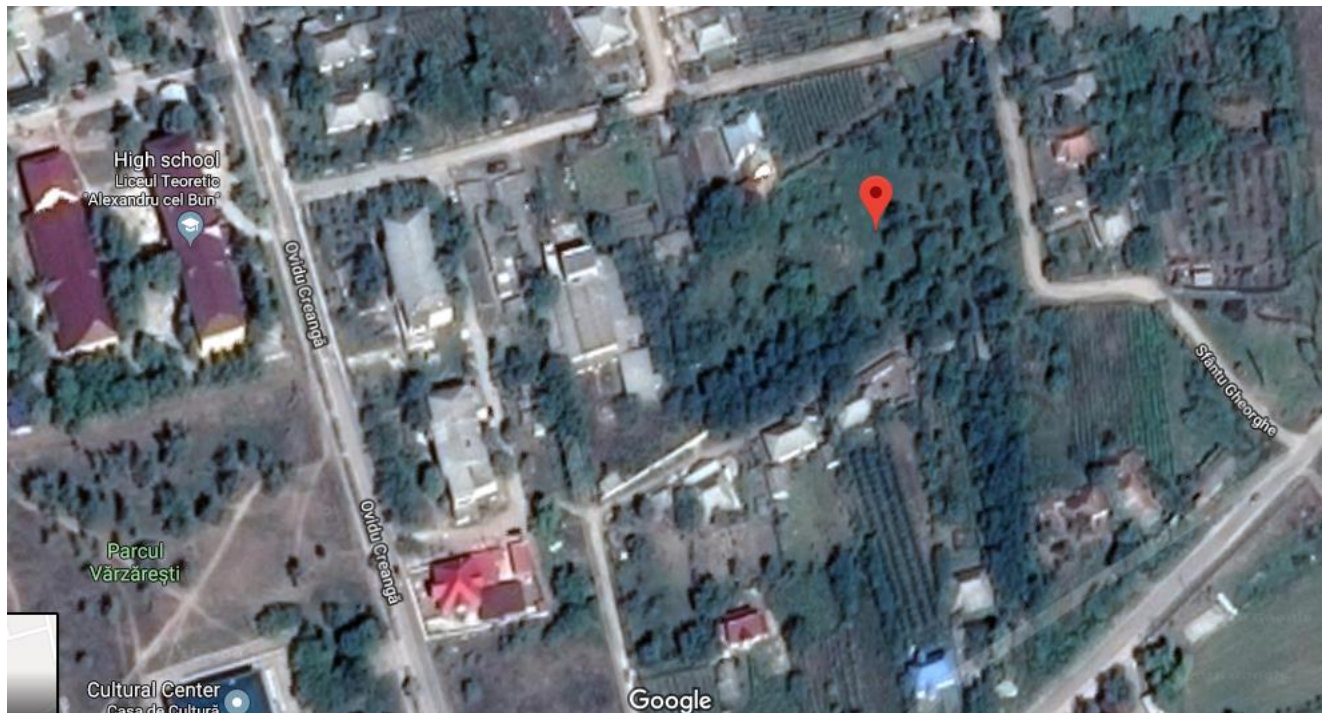
The project was started by JewishGen, Bessarabia SIG in 2018. The photography was taken by **Serghey Daniliuk**, a resident of Kaushany, Bessarabia SIG long time photographer and researcher.

Location, Maps

Nisporeny Jewish Cemetery on the Google Map: **47°05'53.7"N 28°10'35.0"E**

The cemetery is located in the village of Varsaresti, North of Nisporeni. It borders with the street Sfantu Gheorghe, and in two blocks of High school – Liceul Teoretic “Alexandru cel Bun” and Cultural Center Casa de Cultura Varsaresti.





**Nisporeni at
Google Map
of Moldova**

Jewish Population

In 1924 there were 54 Jewish businesses for a total population in the town of 6,000. 380 Jews from a total of 5,975 lived in Nisporeni in 1930.

See close by to the North – Calarash, to the West – Ungheni and Iasi (Romania), to the South-East – Hincesti, to the South – Leova, to the East – Kishinev.

From Jewish Heritage Sites and Monuments in Moldova

Report “Jewish Heritage Sites and Monuments in Moldova”, created by the United States Commission for the Preservation of America’s Heritage Abroad, 2010, did mention Nisporeni: *The cemetery occupies an area of approximately 20,000 square meters with more than 100 gravestones still visible, with fewer than 25% toppled or broken. The oldest gravestones on the cemetery are datable from the second half of 19th century. The cemetery is surrounded by a broken fence and row of bushes. There is no permanent caretaker, and no maintenance or restoration work has been done in recent years. The remaining three Jews in the town do not have the means to tend the site. The vegetation overgrowth is a serious threat to the graves.*



From the
Report

“Jewish
Heritage Sites
and
Monuments in
Moldova”

Nisporeni

The project and the Volunteers

The project was done in 2018. All photos were translated and deciphered by **Terry Lasky** and **Nathan Gabriel**.

The **173** graves were identified, and burial records submitted to JOWBR (+**170** images), **264** graves are Unknown and can be viewed at Bessarabia SIG website at [Unknown Graves at Nisporeni cemetery](#).

Language of the inscriptions: From 173 submitted about 60 inscriptions are written in Russian, and the rest in Hebrew. There are also a few in Romanian.

Dates: Burials are from the end of 19 century to middle of 20 century. The oldest is from 1870, and the newest is in 1993.

Images from the cemetery









One of the oldest graves



Tzvi ben Bendit

27 Tamuz 5631

Most recent grave



AVERBUKH, Mariya

1-Oct-1909 – 8-Mar-1993

