

The Jewish Cemetery of Jewish Agricultural colony Briceva

Before 1917 **Briceva (Bricheva)** was part of the Soroca uezd, Bessarabia gubernia of the Russian Empire. Now it is part of the Republic of Moldova.

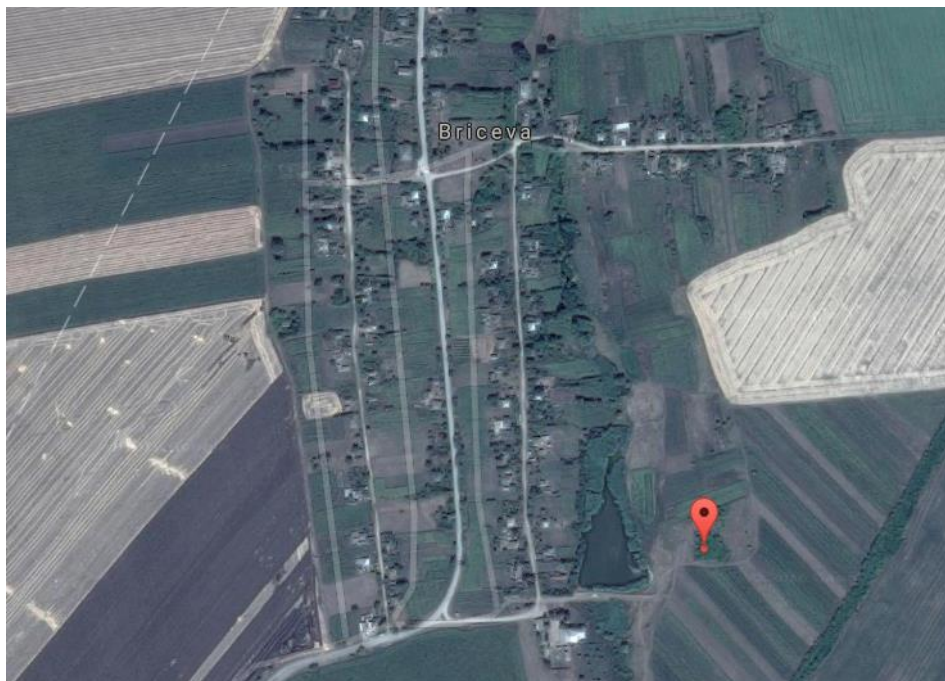
Еврейское Кладбище Колонии Бричева, Молдова

Final report, Yefim Kogan, October 27, 2016

Translation was done by members of Bessarabia SIG.

The project was started by JewishGen, Bessarabia SIG in 2016. The photographs were taken by **Serghey Daniliuk**.

Address: South East of Bricevo, outside of town



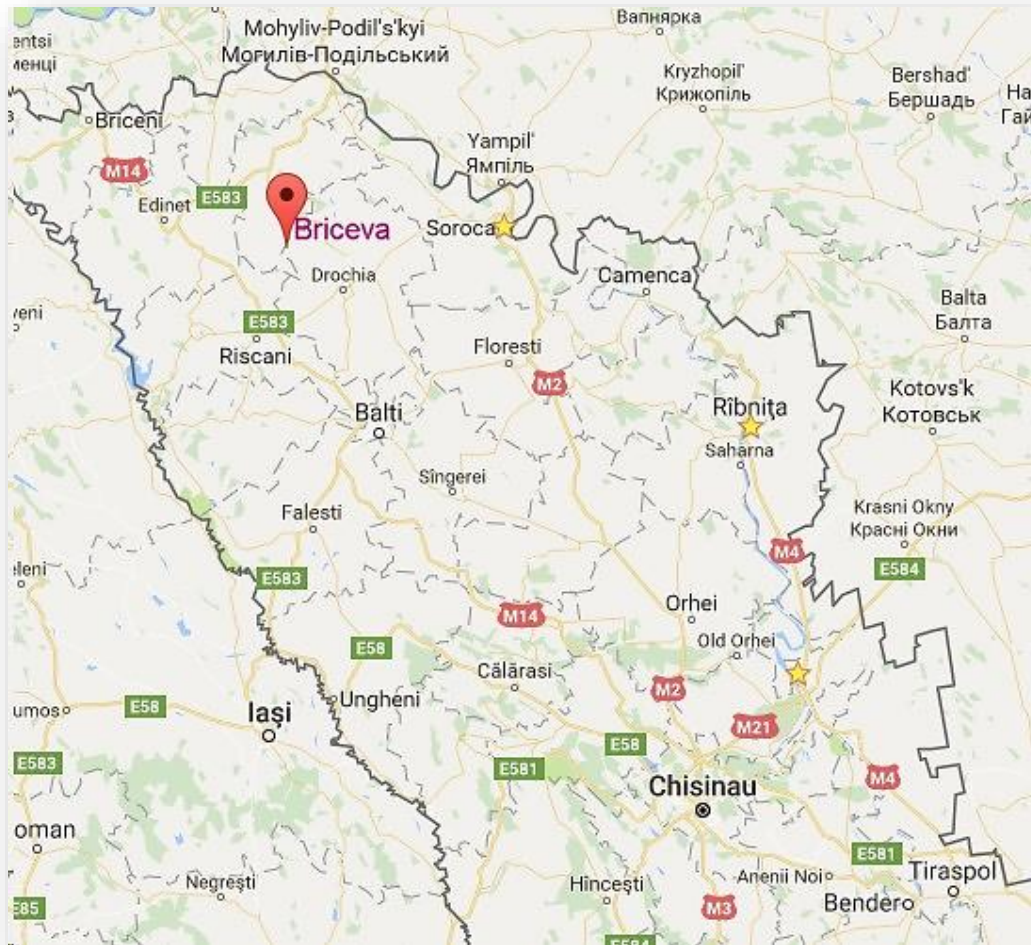
Jewish Cemetery of
Bricevo on the
Google Map

Coordinates:

48 06'33.8"N

27 39'10.4"E

1,598 Jews lived in Briceva colony in 1897 from a total population of 1,664. 127 Jewish businesses are found in the Business Directory of 1923-24. 2,431 Jews lived in Briceva in 1930 from total population of 2,645. The colony was established in 1836 by 35 families who had a total of 289 desyatin of land (1 desyatin = 10,925 sq.m), and also 66 families without land.



Briceva on the Google map of Moldova. See close by to the East – Soroca, to the West – Edinet, and to the South East Balti.

Translation of the inscriptions was done mostly by **Nathen Gabriel**, from Hebrew, and few by **Yefim Kogan** from Russian.

128 burial records with **128** photographs are uploaded to JOWBR. There are **255** Images of Unknown graves that you can access at [Unknown Graves at Briceva cemetery](#).

Language of the inscriptions: mostly Hebrew, very few inscriptions are written in Russian.

Dates: Most of the burials in this cemetery are from the beginning of the 20th century, but there are a number of graves dated middle and late 19 century. If we have doubts about the dates, you will see a“?” mark. The most recent burials are from the 1950s.

About 100 gravestones were not photographed, because they are located in woods and there was not a normal access to them. That cemetery should be part of the reconstruction projects of cemeteries in Bessarabia/Moldova in the near future.



Cemetery view from afar.



One of the oldest
graves

**Zalman ben
Khayim**

Died 15 Av 5608
(14 August 1848)

Memorial with nice engravings

Moshe ben Naftali

Died 22 Nisan 5665?

(27 April 1905)



Overviews of the cemetery

