

The Jewish Cemetery of Jewish Agricultural colony Alexandreni

Before 1917 Alexandreni was part of the [Bălți uezd \(county\)](#),
Bessarabia gubernia of the Russian Empire.

Now the town is part of the Republic of Moldova.

Еврейское Кладбище Колонии Александрены, Молдова

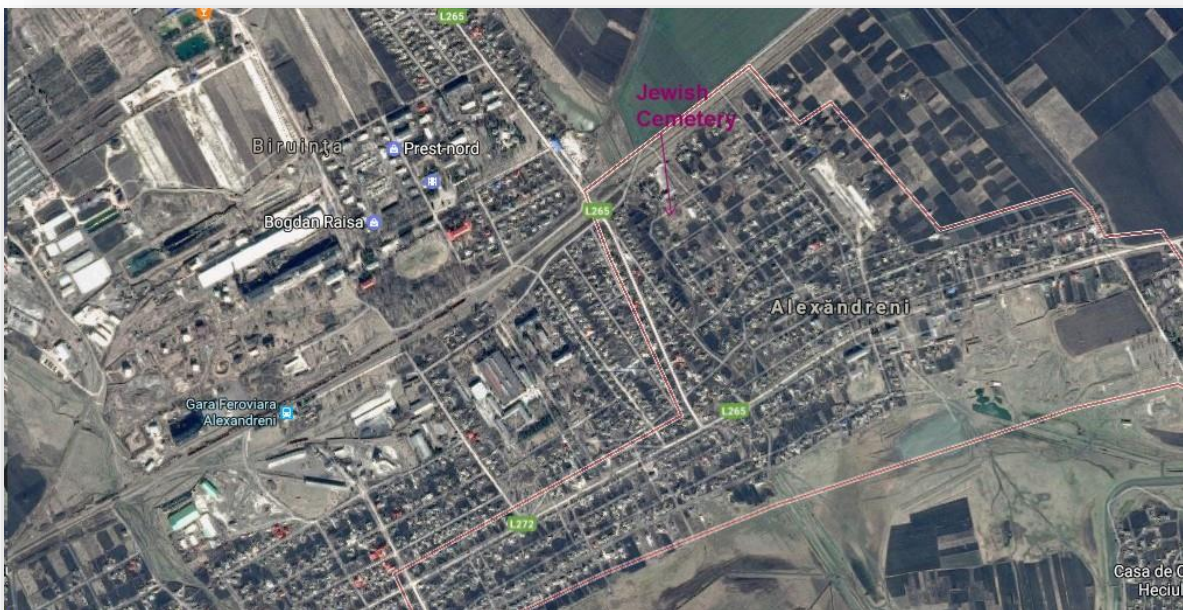
Final report, Yefim Kogan, December 27, 2016

Translation was done by members of Bessarabia SIG.

[Alexandreni, Moldova: 47°48' N, 28°04' E](#)

A local volunteer **Aleksander Kosovski** took the photographs. He is a resident of Alexandreni/Biruinta.

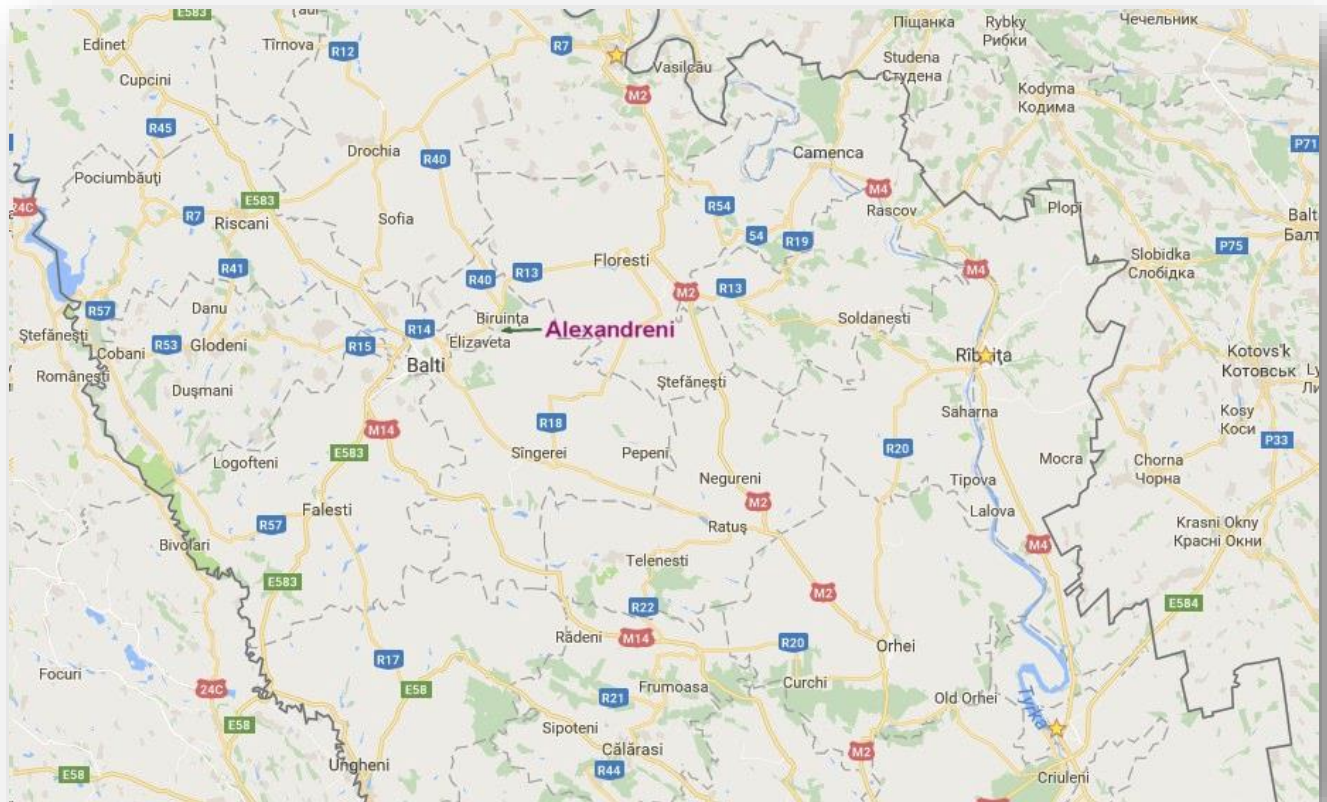
Address: close to the intersection (bridge) of route 265 and the rail tracks.



Jews in Alexandreni

The village of Alexandreni was established in 1837 as a Jewish agricultural colony, with Jews remaining as the majority of the population prior to World War II.

1,190 Jews lived in Alexandreni colony in 1897 from a total population of 1253. In 1899, 70 Jewish families with 363 members rented 247 desyztin of land to grow mostly corn. (Jewish Encyclopedia, Broghauz-Efron, 1908-1913). 47 Jewish businesses were in the town in 1924, 1018 Jews lived there in 1930 from a total of 1,524.



Alexandreni on the Google map of Moldova. See close by to the West– Balti, to the West – Edinet, and to the North East – Floresti.

Nathen Gabriel did the translation of the inscriptions, from Hebrew, and **Yefim Kogan** organized the project.

From “Jewish Heritage Sites and Monuments in Moldova”

According to the report “[Jewish Heritage Sites and Monuments in Moldova](#)”, created by the United States Commission for the Preservation of America’s Heritage Abroad, 2010, the cemetery in Alexandreni is not in use and is in very poor condition. And it is written: *The cemetery occupies a site about 1,500 square meters in size and contains more than 700 extant gravestones. The oldest gravestones date from the 18th century. The cemetery is no longer in use and is only rarely visited. There is no caretaker, and there has been no care for the site for many years. Although the condition is poor, less than a quarter of the surviving stones are toppled or broken. Water drainage and vegetation overgrowth are constant problems disturbing graves in the cemetery.*



Photo from Alexandreni Cemetery, from the report “Jewish Heritage Sites and Monuments in Moldova”.

In Alexandreni there is also an Execution Site, where The Jews of Alexandreni were murdered in June 1941, when they were rounded up and marched to fields outside the village and executed. There are no signs or markers to indicate the execution site, and only a few local residents can remember its location.



from the report “Jewish Heritage Sites and Monuments in Moldova”.

48 burial records with **47** photographs are uploaded to JOWBR. There are **11** Images of Unknown graves that you can access at [Unknown Graves at Aleksandreni cemetery](#).

Language of the inscriptions: mostly Hebrew, very few inscriptions are written in Russian.

Dates: All the burials are from 1850s to 1930s. Several dates were hard to read – you may see “?” – we put forth our best guess.

The project is only half done. Our volunteer promised to get the rest of the photos soon , and our group will put them online.

One of the oldest graves:



Sender ben
Binyamin

16th of Kislev,
5611

(November 21,
1850)

One of the last graves.



BARDENIK

Tove bat
Zeyde

24th of
Tamuz 5699

(July 11,
1939)

Different views of the cemetery graves:

















