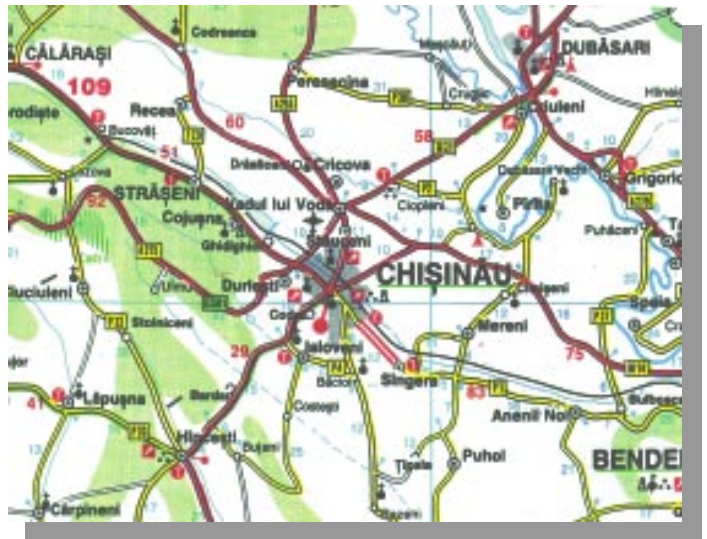


KISHINEV



CHIȘINĂU (ROM)



Location

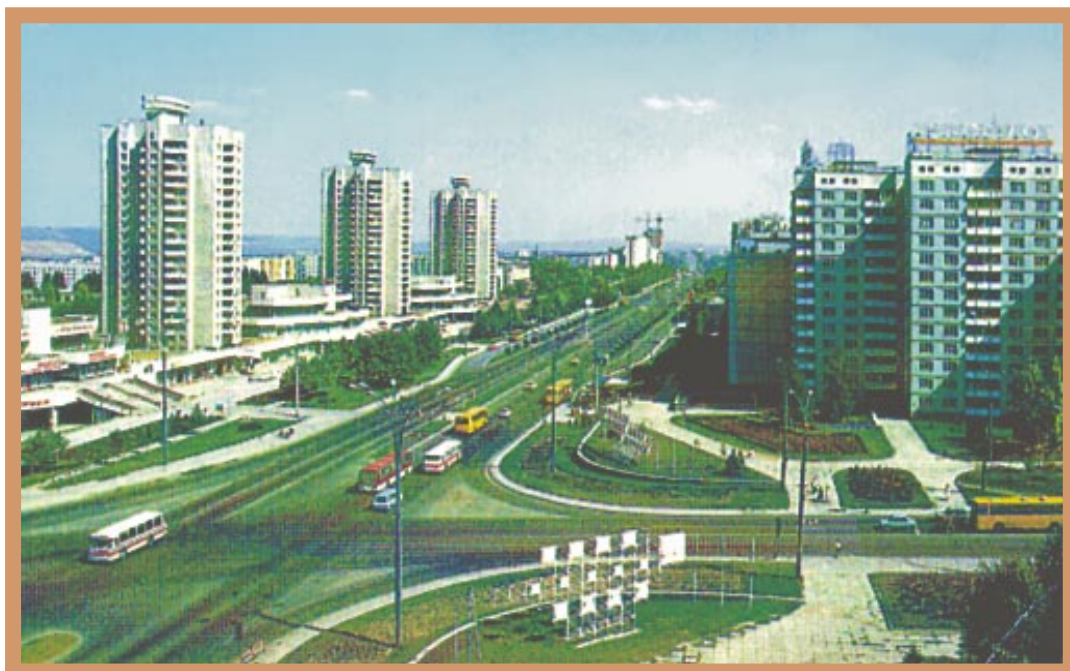
131 km SE of Beltsy
47° 00' / 28° 50'

Region

Kishinev

Jewish Population, Pre-Holocaust

41,405 (36% of the general population in 1930)



Town view, c. 1985

859



Local pharmacy, c. 1930

860



Palace Hotel, c. 1920

861



A former synagogue, 1947

862



Entrance to the only operating synagogue on the left, 1993

863



Interior of the above synagogue, 1993

864



Interior of the above synagogue, 1993

865



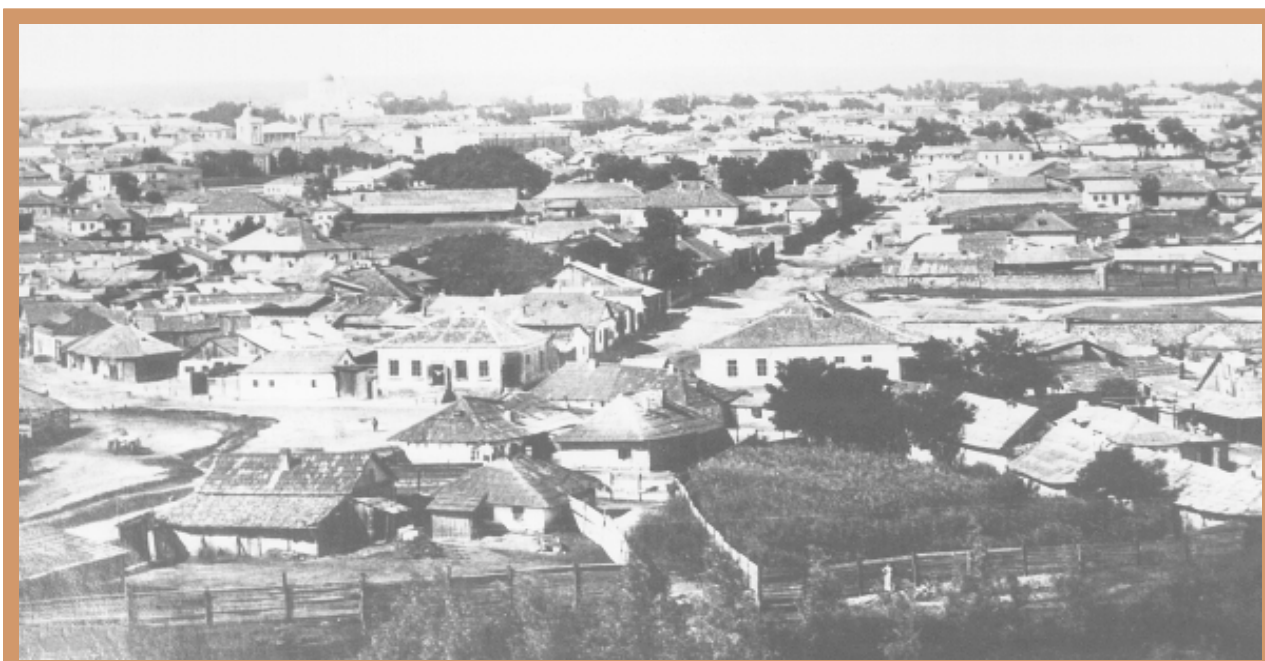
Interior of the synagogue on the facing page, 1993

866



Interior of the synagogue on the facing page, 1993

867



■ Town view, early 1900s

868



■ Post office, c. 1920

869



Jewish cemetery, 1959

870



From left, Chaim, son of Feivish, died 1831. Center tombstone reads "Meir Dov, son of Yitzchak Aisik Ha-Levi, died 1831" (photo, 1959).

871



Monument commemorating the 1903 Kishinev Pogrom 872



Monument commemorating the 1903 Kishinev Pogrom 873



Left, Sara-Rivka, died 1832, daughter of Asher Shmuel 874
 Right, Liba, died 1832, daughter of Yitzchak (photo, 1959)



Left, tombstone of Josef Dvantman, died 1930, son of Mordechai
Right, tombstone of Meyer Feigel, died 1935, son of David (photo, 1959)

875



Jewish cemetery, 1997

876



Holocaust memorial near the entrance of the Kishinev Ghetto (1941–1942). “Martyrs and Victims of the Kishinev Ghetto!
We, the Living, Remember You” (in Romanian, Russian, Hebrew and Yiddish), 1998

877