

BELTSY



BĂLȚI (ROM)



Location

131 km NW of Kishinev
47° 46' / 27° 56'

Region

Beltsy

Jewish Population, Pre-Holocaust

14,259 (46% of general population in 1930)



Only operating synagogue in Bălți, 1997

833



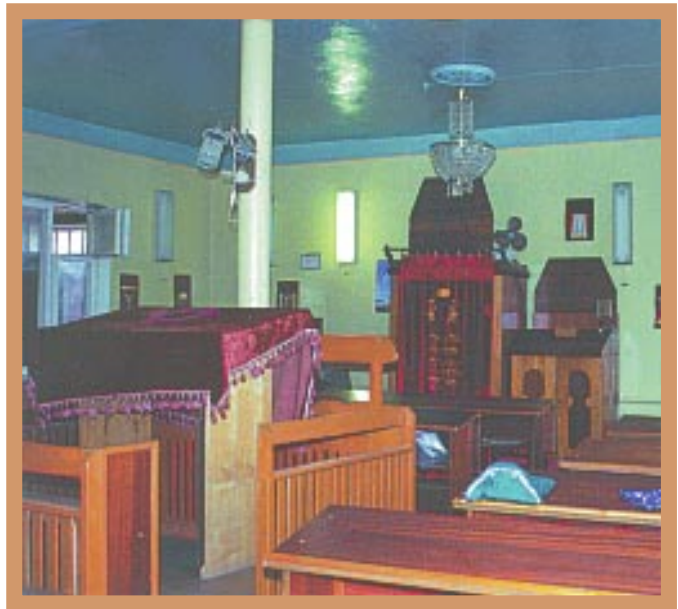
The center of town, c. 1990

834



■ In the Beltsy Synagogue, 1993

835



■ In the Beltsy Synagogue, 1993

836



■ Former Jewish cultural center, 1993

837



■ Jewish cemetery, 1993

838



■ Tombstone of Rachel Schwartzman, 1875–1900 (photo, 1993)

839



■ Tombstone of Blima (Roza) Katz, 1925-1959, daughter of Yona (photo, 1993)

840



■ Entrance to Jewish cemetery, 1993

841



■ Jewish children learn in a Hebrew day school, 1993

842



■ A Jewish boy recites in Hebrew, 1993

843



■ Jewish cemetery with tombstones dating from the late 19th century, 1966

844