

# АТАКИ



## OTACI (ROM); ATACHI (ALT)



### Location

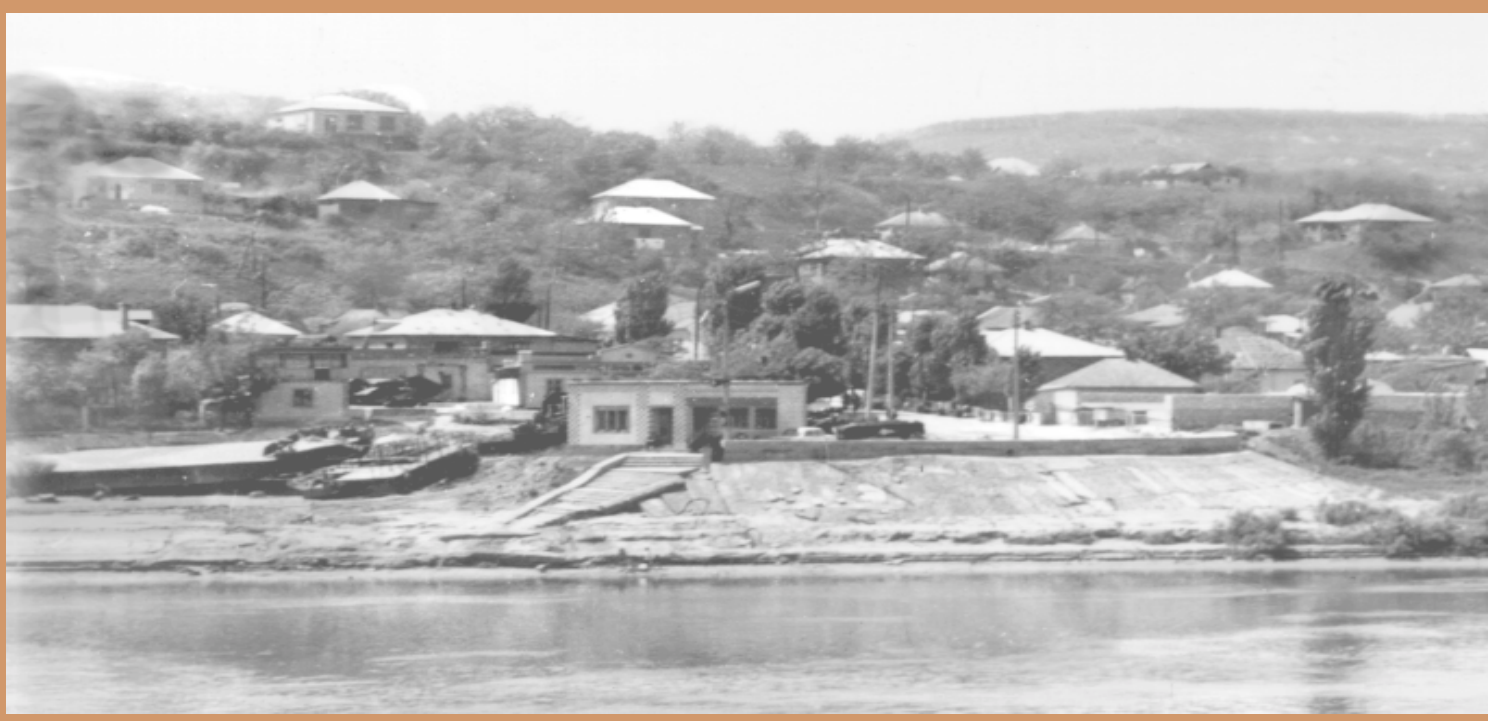
176 km NW of Kishinev  
48° 27' / 27° 47'

### Region

Oknitsa

### Jewish Population, Pre-Holocaust

2,781 (79.4% of general population in 1930)



View of Ataki from the Dniester River. The sister city across the river is Mogilev Podolskiy, Ukraine, 1965.



■ Former synagogue in Ataki, now a cultural center, 1992

825



826





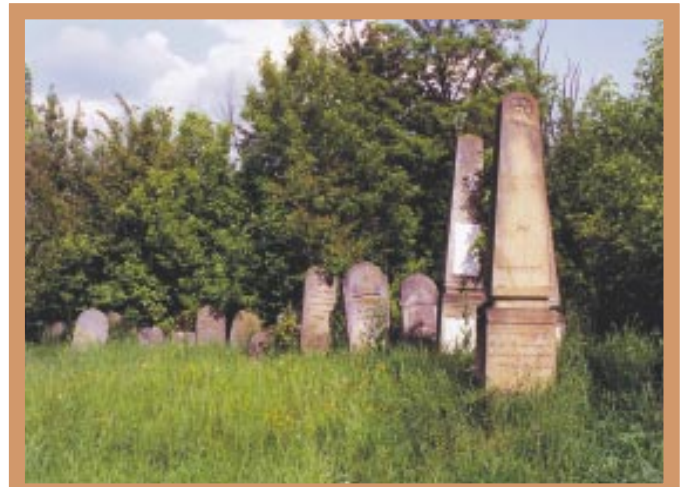
Department store formerly owned by a Jewish family in Ataki, c. 1960

827



Jewish cemetery in nearby Volchinets, where the Jews of Ataki were buried. Nearly 1,000 tombstones remain, 1992.

828



Jewish cemetery in nearby Volchinets, 1992

829



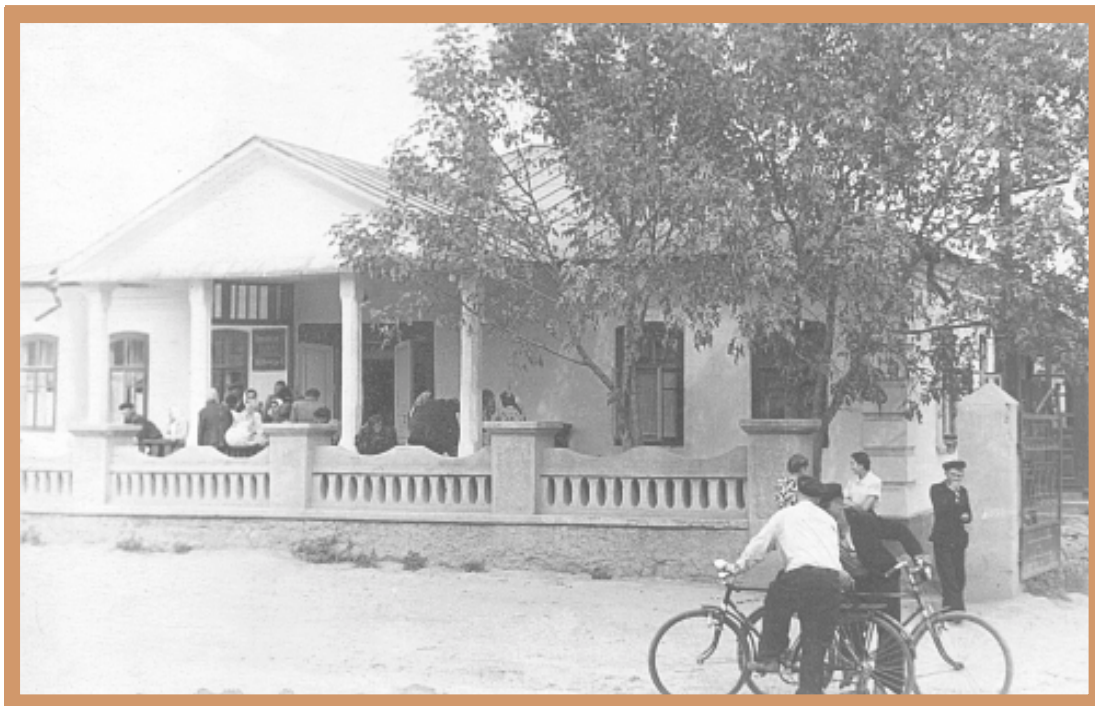
■ Former Jewish district in Ataki, 1992

830



■ Jewish cemetery in nearby Volchinets, 1992

831



■ A former Jewish school destroyed in the 1960s to make way for new houses (photo, c. 1962)

832